

# REGISTERED NURSING

University courses - Victoria



MARCH 2024  
CAREERS DEPARTMENT

# Introduction

This document has been developed to assist Year 10 - 12 students and their families in researching undergraduate entry registered nursing courses in Victoria. Please check university websites for up-to-date information.

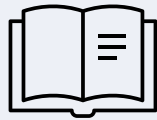
**Disclaimer:** Information has been taken from university websites and the Victorian Tertiary Admissions Centre (VTAC). Universities featured in this guide reserve the right to change course information, admissions, and entry requirements at any time and without notice. Note: photos in this document are stock images and aren't representative of students at the universities.

Written by Sandie McKoy, March 2024  
Career Development Leader, Catholic College Wodonga



## Indicative ATAR

Please use indicative ATARs and selection ranks as a guide as they may change for future intakes.



## English prerequisite

EAL = English as an Additional Language. 'Any other English' includes English, English Language, and Literature. Nursing and midwifery applicants will need to meet [minimum English language requirements](#).



## Undergraduate

This is usually your first course at university. For example – bachelor degree.



## Graduate

This is study you do once you have graduated from a bachelor degree. For example – Master's degree.





## TELL ME ABOUT REGISTERED NURSING

Registered Nurses (RNs) assess, plan, and implement patient care, collaborating with healthcare teams to ensure high-quality treatment. They administer medications, conduct diagnostic tests, monitor patient progress, and provide education and support to patients and families.

RNs also supervise Enrolled Nurses and other healthcare staff, ensuring adherence to professional standards and practices. They play a critical role in health promotion, disease prevention, and patient advocacy in diverse healthcare settings.

### Are there jobs?

Yes. Future job growth is expected to grow strongly. Check up to date info on [Labour Market Insights](#) and research jobs on [seek.com](#).

### Will I have to go to uni?

Yes. You can only become a qualified Registered Nurse through studying an accredited degree at a higher education institute. If you aren't keen to go to uni, you can study to become an Enrolled Nurse at a Registered Training Organisation like a TAFE.

## CAN I SPECIALISE?

Yes! Registered Nurses can undertake additional training in specialist areas such as:

### Clinical

Critical care	Gerontological nursing
Mental health	Emergency care
Cardiac care	Acute care
Forensic	Intensive care
Neonatal care	Neonatal special care
Paediatric	Perioperative practices
Oncology	Maternal child health
Wound Care	Renal
Correctional health	Surgical
Neuroscience	Medical
Forensic	Trauma Nursing
Palliative care	Psychiatric
Cosmetic	Anaesthetic

### Non clinical

Public health	Leadership
Education	Health management

They can also study to become a [Nurse Practitioner](#), which takes many years of training and study.

Registered nursing can also provide a pathway to studying graduate entry paramedicine and midwifery.

# Not ready for uni?

If you'd like to complete a VET qualification first, you can study to qualify as an Assistant in Nursing (AIN) and/or an Enrolled Nurse (EN). The benefits of starting with a VET qualification include:

- More industry experience
- Hands-on practical learning
- The courses may be free
- You can work as an AIN or EN while you're at uni
- You can use the EN course as a pathway to uni
- You can work as an EN without having to go to uni.

## ASSISTANT IN NURSING

An Assistant in Nursing (AIN) provides basic nursing care under the supervision of Registered Nurses. AINs assist with daily activities, personal care, and health monitoring in various settings like hospitals, aged care facilities, and community health centres.

### Qualification

Certificate III in Health Services Assistant, 6-months.  
Study at a Registered Training Organisation such as a TAFE.

## ENROLLED NURSE

An Enrolled Nurse (EN) provides nursing care under the direction and supervision of a Registered Nurse. ENs are registered with the Nursing and Midwifery Board of Australia and work in a variety of healthcare settings. ENs can specialise in various fields, including aged care, mental health, community health, surgical and medical nursing, emergency care, paediatrics, palliative care, and rehabilitation. With additional training they can administer medications and work through levels of advanced practice.

### Qualification

Diploma of Nursing, 18 – 24 months.  
Study at a Registered Training Organisation such as a TAFE.

## REGISTERED NURSE

### Qualification – without an enrolled nursing qualification

Bachelor of Nursing, 3-years.  
Study at a higher education institute.

### Qualification – with an enrolled nursing qualification

Bachelor of Nursing (second year entry), 2-years.  
Study at a higher education institute.

Note: some universities only recognise a 'graded' Diploma of Nursing. Not all Registered Training Organisations offer these, so if you complete an ungraded Diploma, your university options may be limited.

## VET TO UNI PATHWAY

### STEP 1

#### Diploma of Nursing

18 – 24 months  
Each Registered Training Organisation has different entry requirements.

RTOs offering this course: [click here](#)

### STEP 2

#### Register

Register to become an accredited Enrolled Nurse with the Nursing and Midwifery Board of Australia.

### STEP 3 (OPTIONAL)

#### Enrolled Nurse Transition to Practice

Apply for a paid 12-month 'Enrolled Nurse Transition to Practice' program or work as an EN straight after graduation.

### STEP 4

#### Higher Education Institute

Apply for the Bachelor of Nursing (Enrolled Nurse Pathway) at a higher education institute such as a university. The course will take 2-years to complete.

# How to become a Registered Nurse

This information is for courses in Victoria.

## **STEP 1: Secondary school studies**

Study VCE subjects such as Biology, Health And Human Development, Psychology, Physical Education, and Mathematics. Achieve a competitive ATAR.

## **STEP 2: complete an accredited registered nursing degree**

Complete an accredited undergraduate or graduate entry degree.

You will need to meet English language requirements, inherent requirements (e.g., communication skills), and academic entry requirements for course admission. You may also be required to get or prove you have certain immunisations and get a Police Record Check and Working with Children Check.

## **STEP 3: Registration**

Apply to register with the Nursing and Midwifery Board of Australia to practice as a Registered Nurse.

## **STEP 4: Graduate Transition to Practice program**

You have the option of completing a 12-month graduate nursing program. Entry is competitive and you will generally rotate between different nursing specialisations or focus intensively on one or two nursing areas.

## **STEP 5: Renew your registration each year**

Renew your registration each year and ensure you meet the registration standards (i.e., continuing professional development hours).

## **Further study and training**

Undertake further study and training to specialise in a clinical or non-clinical area.

# What ATAR will I need?

When it comes to the ATAR, there are three ways you can gain direct entry into an undergraduate entry registered nursing degree in Victoria – achieving a selection rank above the lowest selection rank for the relevant intake, achieving above the guaranteed ATAR, or receiving a place in one of three early entry programs.

## SELECTION RANK

Universities use the 'selection rank' when assessing course applications.

The selection rank is your ATAR plus any adjustment factors taken into consideration by the university (e.g., equity and academic adjustments).

Adjustment factors are added to your combined study scores (VCE aggregate) and your ATAR is re-ranked.

Your selection rank will be different for each course at each university as each institute uses their own adjustment programs.

You won't know what your selection rank is, but you'll need to achieve a rank above the 'lowest selection rank' for the relevant intake year.

Learn about the selection rank and ATAR profiles via this [video](#).

## GUARANTEED ATAR

The following universities have a 'guaranteed ATAR' program.

The guaranteed ATARs for nursing listed below are relevant for the 2024 intake and may change for the 2025 intake.

### La Trobe University

#### [Aspire Community Contribution Program](#)

Regional campuses – 50  
Melbourne campus – 55

#### [Regional Benefits Program\\*](#)

Bendigo campus – 80

### Federation University

#### [Early Offer Program](#)

All campuses – 70

### Monash University

#### [Monash Guarantee program \\*](#)

Peninsula & Clayton campus – 70

#### [Monash Indigenous Entry Scheme\\*](#)

Clayton & Peninsula campuses – 50

\*Note – these programs are only available to eligible applicants.

## NO ATAR

The following universities have 'ATAR free' early entry programs.

Successful applicants may receive a conditional ATAR free offer (must complete Year 12 and achieve entry requirements for the course).

### Australian Catholic University

#### [ACU Guarantee](#)

Selection: Year 11 grades, optional completion of up to three personal statements.

### La Trobe University

#### [Aspire Year 11 Conditional Entry](#)

Selection: Year 11 grades, school endorsement form.

### Charles Sturt University

#### [Charles Sturt Advantage \(Early Offer\)](#)

Selection: Year 11 grades, answers to 'soft skills' assessment.

# Course summary

The following two pages list the nursing courses you can apply for at Victorian universities. The rest of the document will give information about the courses at each university.

## LA (Lowest ATAR)

Lowest ATAR to receive entry into the course excluding any adjustment factors for the 2024 January intake (VTAC applicants).

## LSR (Lowest Selection Rank)

Lowest selection rank inclusive of ATAR + adjustment factors to receive entry into the course for the 2024 January intake (VTAC applicants).

## L/N

Not published: lowest ATAR for the 2024 January intake.

University	Course	Campus	LA	LSR
<b>Charles Sturt University</b>	Bachelor of Nursing	Albury-Wodonga		65.0
<b>Australian Catholic University</b>	Bachelor of Nursing (First Year Entry)	Melbourne	56.40	65.0
		Ballarat	51.75	60.45
	Bachelor of Nursing / Bachelor of Business Administration	Melbourne	58.35	65.10
	Bachelor of Nursing / Bachelor of Paramedicine	Ballarat	72.80	80.10
<b>Deakin University</b>	Bachelor of Nursing	Melbourne Burwood	59.90	70.25
		Geelong Waterfront	50.10	60.30
		Warrnambool	50.10	52.50
	Bachelor of Nursing (Clinical Leadership)	Melbourne Burwood	75.30	80.0
	Bachelor of Nursing / Bachelor of Psychological Science	Melbourne Burwood	67.80	75.25
		Geelong Waterfront	64.50	76.50
		Warrnambool	L/N	L/N
	Bachelor of Nursing / Bachelor of Public Health & Health Promotion	Melbourne Burwood	L/N	L/N
		Geelong Waterfront	L/N	L/N
	Bachelor of Nursing / Bachelor of Midwifery	Melbourne Burwood	78.85	88.0
Geelong Waterfront		70.30	82.30	
Warrnambool		66.30	78.30	
<b>La Trobe University</b>	Bachelor of Nursing (Pre-Registration)	Albury-Wodonga	41.80	56.05
		Bendigo	42.35	56.60
		Melbourne	50.40	65.0
		Shepparton	46.40	60.80
		Mildura	44.50	58.75
	Bachelor of Nursing (Pre-Registration) (First Nations Australian Entry)	Bendigo	L/N	L/N
	Bachelor of Nursing / Bachelor of Psychological Science	Albury-Wodonga	L/N	L/N
		Bendigo	L/N	L/N
		Melbourne	55.50	66.80
	Bachelor of Nursing / Bachelor of Midwifery	Bendigo	60.50	74.0
		Melbourne	67.0	80.0
	Bachelor of Nursing / Bachelor of Midwifery (Regional Entry)	Bendigo	63.0	76.90

University	Course	Campus	LA	LSR
Swinburne University of Technology	Bachelor of Nursing (First Year Entry)	Hawthorn	54.0	62.55
		Wantirna	55.50	64.25
RMIT University	Bachelor of Nursing	Bundoora	50.95	65.65
Victoria University	Bachelor of Nursing	St Albans	46.90	58.15
	Bachelor of Nursing / Bachelor of Midwifery	St Albans	55.80	70.10
Federation University	Bachelor of Nursing	Ballarat – Mt Helen	46.10	56.0
		Berwick	41.40	51.30
		Gippsland	45.75	55.60
	Bachelor of Nursing (Blended Learning Delivery)	Ballarat – Mt Helen	LN	LN
		Berwick	44.75	52.25
		Gippsland	44.75	55.20
		Wonthaggi	LN	LN
	Diploma of Nursing / Bachelor of Nursing	Ballarat – Mt Helen	LN	LN
Wimmera		LN	LN	
Bachelor of Nursing / Bachelor of Midwifery (Blended Learning Delivery)	Ballarat – Mt Helen	51.50	61.45	
	Gippsland	51.45	62.40	
Monash University	Bachelor of Nursing	Clayton	66.70	76.70
		Peninsula	60.15	70.0
	Bachelor of Nursing - Indigenous Entry	Clayton	LN	LN
	Bachelor of Nursing - Scholars Program	Clayton	83.35	90.20
		Peninsula	LN	LN
	Bachelor of Nursing / Bachelor of Midwifery (Honours)	Peninsula	LN	LN
Diploma of Tertiary Studies – Nursing	Peninsula	50.10	50.10	
Holmesglen Institute	Bachelor of Nursing	Moorabbin		50.00
Torrens University	Bachelor of Nursing	Melbourne		60.00
University of Melbourne	Master of Nursing	Parkville		Graduate



# CHARLES STURT UNIVERSITY

Study on-campus or online.

The nursing school is over 30 years old.

Course is fully accredited.

Placements in regional and metropolitan communities across NSW.

At least 800 hours of industry placement.

92% of grads are employed within 4-months of graduating.



The Bachelor of Nursing at Charles Sturt University has led the way for nurses for more than 30 years. Our undergraduate students are part of the university's proud nursing tradition, joining the ranks of Charles Sturt University graduates across Australia who are known for their resilience, versatility, and adaptability. You'll graduate industry-ready and prepared for your role as a registered nurse.

## BACHELOR OF NURSING

Our accredited course will prepare you for the healthcare workforce, and you'll benefit from our strong industry links and ties to regional and metropolitan communities across New South Wales. Patient care requires a holistic approach, and this course provides you with the theory, skills and understanding you'll need in the workplace.

## PRACTICAL PROGRAM

The Bachelor of Nursing supports students to undertake at least 800 hours of workplace learning in an exciting range of authentic healthcare settings.

## PROFESSIONAL AFFILIATIONS

Charles Sturt University has strong links with the Western, Far Western and Murrumbidgee Local Health Districts of New South Wales. These affiliations provide the opportunity to gain real-world practical experience and ensure our course is relevant to the industry and serves contemporary nursing needs.

## FIRST YEAR SUBJECTS

The following are the first-year subjects for the 2024 intake. They may change for the 2025 intake.

### Semester 1

Contexts of Nursing  
Human Anatomy & Physiology for Nurses 1  
Nursing Workplace Learning 1  
Clinical Reasoning in Nursing 1

### Semester 2

Health Challenges 1 Acute Care A  
Human Anatomy & Physiology for Nurses 2  
Nursing Workplace Learning 2  
Clinical Reasoning in Nursing 2

## COURSE INFORMATION

Click [here](#)

## CONNECTIONS - FIRST NATIONS DIRECT ENTRY PROGRAM

First Nations Australian applicants who complete the 5-day Connections program may be eligible to receive guaranteed entry into the Bachelor of Nursing. The program is free, and travel, meals and accommodation costs will be subsidised. Click [here](#).

## HOW TO APPLY

### Step 1: apply direct to the University

If you have strong Year 11 results, apply direct to the university via the 'Charles Sturt Advantage (Early Offer)' program. Your application will be assessed based on your year 11 grades and answers to a soft skills assessment. Applications open on 1 May and close on 31 August 2024 and you will be notified in late September if you've received a conditional or firm offer for the course.

### Step 2: via a Tertiary Admission Centre

Apply via the Universities Admissions Centre (UAC) or the Victorian Tertiary Admissions Centre (VTAC). Note - applicants planning to apply for the [Schools Recommendation Scheme](#) must apply via UAC. Your application will be assessed on your Year 12 results. It's important to apply via VTAC or UAC in case you don't receive an offer via the Advantage program.

VTAC: applications open 29 July 2024.

UAC: applications open 3 April 2024 for NSW students and late July/early August 2024 for Victorian students.

Course	Units 3 and 4	Campus
Bachelor of Nursing 3-years	Assumed knowledge: English plus any two units of science.  Recommended subjects: Biology, Advanced Mathematics, Chemistry, Health and Human Development, Physical Education.	Albury-Wodonga

## PATHWAY EXAMPLES

The following are two pathway options if you haven't met the requirements for direct entry into the course.

### Via a Charles Sturt enabling course

#### STEP 1: enabling course

Complete the 6-month [Undergraduate Certificate in University Preparation](#) on-campus or online.

#### STEP 2: Bachelor of Nursing

You may be guaranteed entry into the Bachelor of Nursing providing you meet English language requirements.

### Via a VET pathway

#### STEP 1: Diploma of Nursing

Complete the 2-year Diploma of Nursing at a Registered Training Organisation such as Wodonga TAFE or TAFE NSW.

#### STEP 2: Register

Register as an Enrolled Nurse/Division 2 Nurse with the Nursing and Midwifery Board of Australia.

#### STEP 3: Bachelor of Nursing

Apply for the Bachelor of Nursing. You may receive credit for the first year of the degree.

## SELECTION RANK ADJUSTMENTS

At Charles Sturt, you may be eligible to receive up to 12 adjustment points towards your selection rank. These may be awarded across one or more of the following categories:

### Regional Location Adjustment

Applicants who attend a regional high school will be awarded 5 adjustment points.

### Subject performance

Applicants can receive up to 10 adjustment points for excellence in certain subjects.

### Educational Disadvantage

Up to 7 adjustment points can be awarded for educational disadvantage.

Applicants applying via VTAC for the Albury-Wodonga campus can apply for adjustment factors via the Special Entry Access Scheme. Applicants applying via UAC can apply via the Educational Access Scheme.

Adjustment factors for the above initiatives are calculated automatically for applicants.

Click [here](#).

## PROFESSIONAL ACCREDITATION

The Bachelor of Nursing is accredited by the Australian Nursing and Midwifery Accreditation Council. Graduates may be eligible to apply for registration with the Nursing and Midwifery Board of Australia.

## EARLY ENTRY PROGRAMS

The following early entry programs provide a way to receive an ATAR free or a guaranteed ATAR entry into the Bachelor of Nursing.

### Charles Sturt Advantage (Early Offer)

Applications open on 1 May and close on 31 August. Selection is based on Year 11 results and answers to a soft skills assessment. Successful applicants can receive a firm (ATAR free) or conditional offer (must meet a minimum ATAR).

### Schools Recommendation Scheme

Applications open 3 April for NSW students and August for Victorian students and close on 16 September 2024. Selection is based on Year 11 results and a school rating of your aptitudes. Successful applicants will receive a firm or a conditional offer via the UAC system. Click [here](#).

# AUSTRALIAN CATHOLIC UNIVERSITY

Over 200 clinical nursing partners who welcome ACU placement students nationally

Course is fully accredited.

Ranked equal first for nursing research by ERA

In the top 50 for nursing worldwide by the Academic Ranking of World Universities

At least 800 hours of industry placement starting in Semester 2 of first year.

Train more graduate nurses than any other university in Australia.

Community connection: in line with our Catholic identity and commitment to the common good, you'll have the opportunity to take part in meaningful community engagement from your first year.



ACU graduate nurses are held in high regard for their clinical skills, quick thinking, and compassion. We're connected to an extensive range of hospitals and health care partners, so you will get the best opportunities for industry placements and future employment. If you're after an overseas experience, we also work with care facilities in a number of developed and developing countries.

## BACHELOR OF NURSING – FIRST YEAR ENTRY

In 2023, ACU welcomed 133 nursing students to the Ballarat campus and 605 to the Melbourne campus. According to ACU their nursing program is ranked 4<sup>th</sup> in Australia and 10<sup>th</sup> in the world.

## CLINICAL EXPERIENCE

You will be required to complete at least 800 hours. Students will undertake clinical placements as part of a variety of clinical units throughout the course in hospitals and community facilities. As part of your course, you will be placed in a range of organisations to integrate the theory you learn with practical workplace experiences (placements).

## FIRST YEAR SUBJECTS

The following are the first-year subjects for the 2024 intake. They may change for the 2025 intake.

### Semester 1

Indigenous Health and Culture  
Evidence for Practice  
Transition into Nursing  
Integrating Practice 1: Assessment in Health.

### Semester 2

Human Biological Science 1  
Being Human  
The Person, Health and Wellbeing  
Integrating Practice 2.

## ABORIGINAL AND TORRES STRAIT ISLANDER PROGRAM

If you identify as Aboriginal and/or Torres Strait Islander through VTAC, you will be invited by ACU to take part in an interview. You may receive an offer based on your potential to succeed. Click [here](#).

## COMBINED DEGREES

Applicants can apply to combine the Bachelor of Nursing with one of the following degrees:

- Bachelor of Business Administration
- Bachelor of Paramedicine

## PROFESSIONAL ACCREDITATION

The Bachelor of Nursing is accredited by the Australian Nursing and Midwifery Accreditation Council. Graduates may be eligible to apply for registration with the Nursing and Midwifery Board of Australia.

## HOW TO APPLY

Apply via the [Victorian Tertiary Admissions Centre](#). Applications will open for Year 12 students on 29 July 2024.

## COURSE INFORMATION

Click [here](#).

Course	Prerequisite - Units 3 and 4	Campus
Bachelor of Nursing (First Year Entry) 3-years	Minimum study score of 30 in English (EAL) or 25 in any other English.	Melbourne Ballarat

## PATHWAY EXAMPLES

The following are two excellent pathway options if you haven't met the requirements for direct entry into the course.

### Via an ACU enabling course

#### STEP 1: University pathway

Complete the 40-week Foundation Studies Program at the ACU Melbourne campus or online. Achieve a GPA of at least 4.0 and meet the English language competency for the Bachelor of Nursing.

#### STEP 2: Bachelor of Nursing

Apply for the 3-year Bachelor of Nursing – First Year Entry.

### Via a VET Pathway

#### STEP 1: Diploma of Nursing

Complete the 2-year Diploma of Nursing at an ACU partner RTO such as TAFE NSW or Box Hill Institute.

#### STEP 2: Register

Register as an Enrolled Nurse/Division 2 Nurse with the Nursing and Midwifery Board of Australia.

#### STEP 3: Bachelor of Nursing

Apply for the Bachelor of Nursing. You may receive credit for the first year of the degree.

## SELECTION RANK ADJUSTMENTS

If eligible, ACU will add adjustment factors to your VCE aggregate to recalculate your ATAR and boost your [selection rank](#) for entry into their courses. Adjustment factors are calculated from initiatives such as the following. Note - if you're eligible for multiple initiatives, the maximum aggregate adjustments you can be awarded is 12.

### ACU Subject Program

Applicants can receive up to 5 adjustment factors for high achievement in eligible Units 3 and 4 subjects. In the 2024 intake, the eligible subjects were Biology, Chemistry, any English, Health And Human Development, Mathematical Methods, Specialist Mathematics, and Psychology. Eligible subjects for the 2025 intake will be advertised via [VTAC](#) from 29 July 2024.

### Elite Athlete and Performers Program

Eligible applicants will receive up to 5 adjustment factors.

### Schools Relationship Program, Campus Program, and Regional Schools Program

Eligible applicants will receive a maximum of 5 adjustment factors across these three access schemes.

### Special Entry Access Scheme

Applicants can receive adjustment points for short or long-term disadvantage. Applicants can apply for this scheme via the Victorian Tertiary Admissions Centre (VTAC) between 29 July – 11 October 2024 after creating their VTAC account and adding course preferences.

Read about the above programs via this [link](#).

### Youth Ministry

Applicants who studied Youth Ministry in Year 12 at school are eligible for 5 adjustments.

## EARLY ENTRY PROGRAM

The [ACU Guarantee](#) is a program that uses an alternative selection rank for entry into most courses.

A selection rank is calculated from your Year 11 academic results and can be boosted by several factors such as completing up to three personal statements and living in a rural/regional area.

Successful applicants will receive a conditional offer for the Bachelor of Nursing and will no longer require an ATAR or study scores for entry into the course.

To receive a formal offer, applicants will need to complete Year 12, meet course prerequisites, and preference the course in their VTAC account correctly.

Applications for the program will open on 22 July and close on 16 September 2024.

Note: applicants will still need to formally apply for courses via the Victorian Tertiary Admissions Centre.

# SWINBURNE UNIVERSITY OF TECHNOLOGY

The Bachelor of Nursing is rated 5/5 stars in every category by the Good Universities Guide

Course is fully accredited.

At least 800 hours of industry placements.

Small class sizes.

Strong focus on innovation, technology, and industry experience.

93% of graduates find employment within 4 months of completing their course.



Swinburne University of Technology offers exceptional nursing education, through innovative teaching and learning and through strong industry partnerships. Our graduates go on to work as nurses in a range of areas including primary health care, acute inpatient medical surgical, chronic disease management, mental health, child and family health, palliative care, community nursing, aged care, workplace safety, rural and Indigenous health, and emergency medicine.

## BACHELOR OF NURSING

We've designed our Bachelor of Nursing to prepare you for the diversity and complexities of 21st century nursing. At Swinburne, you'll benefit from our strengths in technology and innovation. Your clinical skills will be developed safely using simulation technology and realistic case studies.

## SPECIALTY AREAS

Speciality study areas will include high acuity nursing, mental health services, aged and palliative care, rural and Indigenous health care, and family, paediatrics, and primary health care.

## INDUSTRY EXPERIENCE

You'll complete 800 clinical practicum hours in a variety of clinical settings.

## FIRST YEAR SUBJECTS

The following are the first-year subjects for the 2024 intake. They may change for the 2025 intake.

### Semester 1

Anatomy and Physiology  
Health Assessment and Decision Making  
Connecting with Culture: Indigenous Australian Experiences  
Strengths Based Nursing

### Semester 2

Ethics & Law in Health Care  
Foundations of Nursing  
Concepts of Aged Care  
Physiology in Medical and Health Sciences

## EARLY ENTRY PROGRAM

The Bachelor of Nursing isn't eligible for the Swinburne Early Entry Program.

## DEFERRMENT

Due to high interest and limited capacity, students will be unable to defer their place in this course.

## MINIMUM ATAR

The minimum ATAR for this course is 65.0 (inclusive of adjustment factors).

## PROFESSIONAL ACCREDITATION

The Bachelor of Nursing is accredited by the Australian Nursing and Midwifery Accreditation Council. Graduates may be eligible to apply for registration with the Nursing and Midwifery Board of Australia.

## HOW TO APPLY

Apply via the [Victorian Tertiary Admissions Centre](#). Applications will open for Year 12 students on 29 July 2024.

## COURSE INFORMATION

Click [here](#).

Course	Units 3 and 4 VCE subjects	Campus
Bachelor of Nursing – First Year Entry 3-years	Prerequisite: minimum study score of 30 in English (EAL) or 25 in any other English.	Hawthorn Wantirna

## PATHWAY EXAMPLES

The following are two pathway options if you haven't met the requirements for direct entry into the course.

### Via a Swinburne TAFE pathway

#### STEP 1: Diploma of Nursing

Complete the 2-year [Diploma of Nursing](#) at Swinburne.

#### STEP 2: Register

Register as an Enrolled Nurse/Division 2 Nurse with the Nursing and Midwifery Board of Australia.

#### STEP 3: Bachelor of Nursing

Apply for the Bachelor of Nursing – Second Year Entry. You may receive credit for the first year of the degree.

### Via a Swinburne UniLink pathway

#### STEP 1: Diploma of Health Science (Unilink)

Complete the [8-month course](#) at Swinburne. You will complete 8 university subjects.

#### STEP 2: Bachelor of Nursing

Apply for the 3-year Bachelor of Nursing – First Year Entry. You may be eligible for credit for two units.

## SELECTION RANK ADJUSTMENTS

If eligible, Swinburne will add adjustment factors to your VCE aggregate to recalculate your ATAR and boost your [selection rank](#) for entry into their courses. Adjustment factors are calculated from initiatives such as the following.

### Subject Bonus Points

Applicants can receive up to 12 adjustments for high achievement in eligible Units 3 and 4 subjects. In the 2024 intake, the eligible subjects were Health and Human Development, any Mathematics, any Science, and Sociology. Eligible subjects for the 2025 intake will be advertised via [VTAC](#) from 29 July 2024.

### Regional Location

Applicants from outer regional and remote communities (as defined by the ASGS Remoteness Classification) will automatically receive two adjustment points.

### Special Entry Access Scheme (SEAS)

Applicants can receive adjustment points for short or long-term disadvantage. Applicants can apply for this scheme via the Victorian Tertiary Admissions Centre (VTAC) between 29 July – 11 October 2024 after creating their VTAC account and adding course preferences.

Read about the above programs via this [link](#).

## EXAMPLE

### Meet Hannah

Hannah wants to maximise her chances of getting an offer for Nursing at Swinburne so she does the following:

### Victorian Tertiary Admissions Centre (VTAC)

She formally applies for the Bachelor of Nursing via VTAC. Applications open 29 July 2024. She completes the Nursing and Midwifery English Language form in her VTAC account.

### Special Education Access Scheme (SEAS)

She completes an application for SEAS via VTAC so she is eligible for equity adjustments towards her selection rank. She is eligible for Category 1 (Personal Information and Location) and Category 2 (Financial Disadvantage). She uploads a recent copy of her parent's Family Tax Benefit statement to her SEAS account as evidence for Category 2.

### Backup courses

She places the Diploma of Nursing and the Unilink Diploma of Health Science on her VTAC preference list as back up courses in case she doesn't receive an offer for the Bachelor of Nursing.

### Outcome

While Hannah received a competitive ATAR, her English study score was below 25 so she didn't meet the entry requirements for the Bachelor of Nursing.

Instead, she received an offer for the Diploma of Nursing at Swinburne via VTAC in the December offer round. She will complete this two-year course and use it as a pathway to gain entry into the Bachelor of Nursing – Second Year Entry.

# RMIT UNIVERSITY

Course is fully accredited.

Participate in 20-weeks of industry placement in rural, regional, and metropolitan areas.

Can complete an elective in one of the following study areas: Palliative Care, Introduction to Specialty Nursing, Paediatric Nursing, or Dual-diagnosis, Co-morbidity & society.

Will undertake clinical practice in each year, in a range of clinical settings across metropolitan and rural areas.

Clinical laboratories will give you extended access to the labs to practise your nursing skills.



Nurses make a difference to people's lives every day. Working across many different communities, registered nurses are in high demand across diverse roles in a vital global industry. This degree consists of theoretical and practical content which will develop your skills and enable you to apply to the Nursing and Midwifery Board of Australia (NMBA) to practise as a registered nurse in Australia.

## BACHELOR OF NURSING

This degree combines theory, nursing laboratory skills, clinical simulation, and clinical practice to ensure you are job-ready at graduation.

It provides a thorough grounding in biosciences and evidence-based care. You'll also gain skills in caring for people in acute care settings, such as medical, surgical, and mental health nursing, as well as specialised areas of nursing practice.

You'll develop skills in our interactive nursing laboratories using high-fidelity simulation and gain experience in a diverse range of clinical placements.

## FIRST YEAR SUBJECTS

The following are the first-year subjects for the 2024 intake. They may change for the 2025 intake.

### Semester 1

Introduction to Nursing Studies  
Principles and Practice of Nursing 1  
Therapeutics for Nursing 1 (Nursing Concepts)  
Introduction to Human Biosciences.

### Semester 2

Principles and Practice of Nursing 2  
Essentials of Health Care Practice  
Systems Physiology  
Professional Experience Practice 1.

## INDIGENOUS ACCESS PROGRAM

If you identify as Aboriginal and/or Torres Strait Islander through VTAC, you will be invited by the Ngarara Willim Centre at RMIT to take part in an interview. You may receive an offer based on your potential to succeed. Click [here](#).

## EARLY ENTRY PROGRAM

Currently, the Bachelor of Nursing isn't eligible for the RMIT Early Offer program.

## PROFESSIONAL ACCREDITATION

The Bachelor of Nursing is accredited by the Australian Nursing and Midwifery Accreditation Council. Graduates may be eligible to apply for registration with the Nursing and Midwifery Board of Australia.

## HOW TO APPLY

Apply via the [Victorian Tertiary Admissions Centre](#). Applications will open for Year 12 students on 29 July 2024.

## COURSE INFORMATION

Click [here](#).

Course	Units 3 and 4 VCE subjects	Campus
Bachelor of Nursing 3-years	Prerequisite: minimum study score of 30 in English (EAL) or 25 in any other English.	Bundoora

## PATHWAY EXAMPLES

The following are two pathway options if you haven't met the requirements for direct entry into the course.

### Via a VET nursing pathway

#### STEP 1: Diploma of Nursing

Complete the 2-year [Diploma of Nursing](#) at RMIT or another Registered Training Organisation. The course must be approved by the Nursing and Midwifery Board of Australia.

#### STEP 2: Register

Register as an Enrolled Nurse/Division 2 Nurse with the Nursing and Midwifery Board of Australia.

#### STEP 3: Bachelor of Nursing (2 Year)

Apply for the Bachelor of Nursing (2 Year). Applicants who completed the Diploma of Nursing at RMIT will be eligible for credit for the first year of the degree. Applicants who completed the Diploma of Nursing at a different institute will be assessed on an individual basis.

### Via a VET pathway

#### STEP 1: Complete a VET course

RMIT will assign a selection rank (comparable to an ATAR) based on your highest completed VET course:

- Advanced Diploma: 81
- Diploma: 72
- Certificate IV: 54

Note: the Diploma of Nursing isn't eligible for this pathway.

#### STEP 2: Bachelor of Nursing

Apply for the 3-year Bachelor of Nursing – First Year Entry and meet the English language requirements.

## SELECTION RANK ADJUSTMENTS

If eligible, RMIT will add adjustment factors to your VCE aggregate to recalculate your ATAR and boost your [selection rank](#) for entry into their courses. Adjustment factors are calculated from initiatives such as the following. Note - if you're eligible for multiple initiatives, the maximum aggregate adjustments you can be awarded is 28.

### Subject Bonus Points

Applicants can receive up to 8 adjustments for high achievement in eligible Units 3 and 4 subjects. In the 2024 intake, the eligible subjects were any Mathematics, any Science, and Information Technology. Eligible subjects for the 2025 intake will be advertised via [VTAC](#) from 29 July 2024.

### Regional Adjustments

For VTAC applicants, the adjustment you can receive is derived from the Australian Bureau of Statistics (ABS) data and whether your address ranks as low, medium, or high-SES based on the ABS's Statistical Area 1 (SA1) measure. If your address is classified as LOW, you will receive an adjustment of 5 aggregate points.

### Special Entry Access Scheme (SEAS)

Applicants can receive up to 16 adjustment points for short or long-term disadvantage. Applicants can apply for this scheme via the Victorian Tertiary Admissions Centre (VTAC) between 29 July – 11 October 2024 after creating their VTAC account and adding course preferences.

### Schools Network Access Program (SNAP)

This scheme is only for partner schools. Applications are made via SEAS.

Read about the above programs via this [link](#).

### RMIT Elite Athlete Program

Eligible applicants will receive up to 10 adjustment points. Click [here](#) for information.

## EXAMPLE

### Meet Will

Will wants to maximise his chances of getting an offer for Nursing at RMIT so he does the following:

### Victorian Tertiary Admissions Centre (VTAC)

He formally applies for the Bachelor of Nursing via VTAC. Applications open 29 July 2024. He completes the Nursing and Midwifery English Language form in his VTAC account.

### Special Education Access Scheme (SEAS)

He completes an application for SEAS via VTAC so he is eligible for equity adjustments towards his selection rank. He is eligible for Category 1 (Personal Information and Location) and Category 3 (Disability and Medical Condition). He uploads a supporting statement from a medical practitioner as evidence for Category 3.

### Backup course

He places the Diploma of Nursing at RMIT on his VTAC preference list as a back-up course in case he doesn't receive an offer for the Bachelor of Nursing.

### Outcome

Will received a competitive ATAR and met the entry requirements for the Bachelor of Nursing. His selection rank was higher than the lowest rank for the December round and he received a formal offer for the course via VTAC.



# DEAKIN UNIVERSITY

Course is fully accredited.

Over 94% of students employed soon after graduating

800+ hours of clinical experience

Gain international perspectives through overseas study.

Deakin's School of Nursing and Midwifery is ranked in the top 1% of universities globally (2018 QS World University Rankings).

Deakin's School of Nursing and Midwifery is ranked in the top two universities in Victoria for nursing and top 5 in Australia.

Top 29 for nursing worldwide.



Deakin's Bachelor of Nursing gives you the knowledge, skills, and ethical understanding you need to become a successful registered nurse – launching you into a career where you can make a real difference. This course prepares you to provide high-quality, safe, patient-centred care in a range of settings. You will practise your clinical skills in one of our state-of-the-art Clinical Simulation Centres, which replicate real-world health service facilities, to prepare you for your clinical placements.

## BACHELOR OF NURSING

As a Deakin nursing graduate, you will be highly sought after by industry for your nursing knowledge, critical thinking, problem solving and communication skills, professionalism, and the ability to provide person-centred, evidence-based care – which is why we are proud to record a high graduate employment rate of over 94%.

## BACHELOR OF NURSING (CLINICAL LEADERSHIP)

This degree is the same as the Bachelor of Nursing, but it contains leadership units.

## CLINICAL EXPERIENCE

You can complete the majority of your placements within one organisation – our fellowship program – or opt to attend different hospitals and settings – the choice is yours.

## FIRST YEAR SUBJECTS

The following are the first-year subjects for the 2024 intake. They may change for the 2025 intake.

### Semester 1

Quality and Safety in Health Care 1  
Evidence-Based Practice  
Introduction to Anatomy and Physiology  
Quality and Safety: Nursing Practice 1.

### Semester 2

Aboriginal and Torres Strait Islander Peoples' History, Culture and Health  
Care of the Child and Adolescent  
Person-Centred Health Assessment  
Quality and Safety: Nursing Practice 2.

## INDIGENOUS APPLICANTS

Applicants can apply for the Bachelor of Nursing through the NIKERI Institute. They can also apply for the indigenous Access Scheme. Click [here](#) for information.

## COMBINED DEGREES

Applicants can apply to combine the Bachelor of Nursing with one of the following degrees:

- Bachelor of Psychological Science
- Bachelor of Public Health & Health Promotion
- Bachelor of Midwifery

## EARLY ENTRY

N/A

## PROFESSIONAL ACCREDITATION

The Bachelor of Nursing is accredited by the Australian Nursing and Midwifery Accreditation Council. Graduates may be eligible to apply for registration with the Nursing and Midwifery Board of Australia.

## HOW TO APPLY

Apply via the [Victorian Tertiary Admissions Centre](#). Applications will open for Year 12 students on 29 July 2024.

## COURSE INFORMATION

Click [here](#).

Course	Units 3 and 4 VCE subjects	Campus
Bachelor of Nursing	Prerequisite: Minimum study score of 30 in English (EAL) or 25 in any other English.	Melbourne Burwood Geelong Waterfront Warrnambool
Bachelor of Nursing (Clinical Leadership)	Prerequisite: Minimum study score of 30 in English (EAL) or 25 in any other English.	Melbourne Burwood

## PATHWAY EXAMPLES

The following are two pathway options if you haven't met the requirements for direct entry into the course.

### Via a VET qualification from a Deakin partner RTO

#### STEP 1: Diploma of Nursing

Complete the 2-year Diploma of Nursing at one of the following Deakin partner RTOs:

Bendigo TAFE  
Box Hill Institute  
Chisholm Institute  
Kangan Institute  
TAFE NSW  
South West TAFE  
The Gordon

#### STEP 2: Register

Register as an Enrolled Nurse/Division 2 Nurse with the Nursing and Midwifery Board of Australia.

#### STEP 3: Bachelor of Nursing (2 Year)

Apply for the Bachelor of Nursing (2 Year). Applicants may be eligible for credit for the first year of the degree.

### Via a VET pathway with a non-partner RTO

#### STEP 1: Diploma of Nursing

Complete the 2-year Diploma of Nursing at another Registered Training Organisation. The course must be approved by the Nursing and Midwifery Board of Australia.

#### STEP 2: Register

Register as an Enrolled Nurse/Division 2 Nurse with the Nursing and Midwifery Board of Australia.

#### STEP 3: Bachelor of Nursing

Apply for the Bachelor of Nursing. Applicants may be eligible for credit for the first year of the degree.

## SELECTION RANK ADJUSTMENTS

If eligible, Deakin will add adjustment factors to your VCE aggregate to recalculate your ATAR and boost your [selection rank](#) for entry into their courses. For example, your ATAR might be 60 but after adjustment factors are added, your selection rank might be 72. Adjustment factors are calculated from initiatives such as the following.

### Subject Bonus Points

Applicants can receive up to 10 adjustments for high achievement in eligible Units 3 and 4 subjects. In the 2024 intake, the eligible subjects were English (any), Biology, Health and Human Development, and any Mathematics. Eligible subjects for the 2025 intake will be advertised via [VTAC](#) from 29 July 2024.

### Special Entry Access Scheme (SEAS)

Applicants can receive adjustment points for short or long-term disadvantage. Applicants can apply for this scheme via the Victorian Tertiary Admissions Centre (VTAC) between 29 July – 11 October 2024 after creating their VTAC account and adding course preferences. Examples of adjustments and the maximum aggregate include:

#### Category 1: Personal Information and Location

- Indigenous applicants: 15
- Regional or remote student: 10
- Under-represented school: 10
- Non-English speaking background: 5

#### Category 2: Financial Disadvantage

- Up to 10 adjustments

#### Category 3: Disability or Medical Condition

- Up to 10 adjustments

#### Category 4: Difficult Circumstances

- 2019/2020 bushfires: up to 10 adjustments
- Other difficult circumstances: up to 10 adjustments.

### Elite Athlete and Performers Adjustment Scheme

Eligible applicants will receive up to 5 adjustment points. Click [here](#) for information.

### Under-represented Discipline

Men applying for the Bachelor of Nursing are eligible to receive additional consideration.

## EXAMPLE

### Meet Jade

Jade wants to maximise her chances of getting an offer for Nursing at Deakin so she does the following:

#### Victorian Tertiary Admissions Centre (VTAC)

She formally applies for the Bachelor of Nursing via VTAC. Applications open 29 July 2024. She completes the Nursing and Midwifery English Language form in her VTAC account.

#### Special Education Access Scheme (SEAS)

She completes an application for SEAS via VTAC so she is eligible for equity adjustments towards her selection rank. She is eligible for Category 1 (Personal Information and Location) and Category 4 (Difficult Circumstances). She uploads a supporting statement from a teacher at her school as evidence for Category 4.

#### Elite Athlete and Performers Adjustment Scheme

She applies for this scheme and uploads evidence of her elite athlete status. Her application is successful and she is eligible for 5 adjustment points towards her selection rank.

#### Backup courses

She places the Diploma of Nursing at Box Hill Institute on her VTAC preference list as a back-up course in case she doesn't receive an offer for the Bachelor of Nursing.

#### Outcome

Jade received a competitive ATAR and met the entry requirements for the Bachelor of Nursing. Her selection rank was higher than the lowest rank for the December round and she received a formal offer for the course via VTAC.

# LA TROBE UNIVERSITY

Course is fully accredited.

Ranked in the world's top 100 for nursing.

Research in nursing is top-rated nationally and ranks 'well-above world standard'.

840 hours of clinical experience

Oldest nursing school in Australia

International clinical opportunities include full semester experiences in Sweden, Denmark, Scotland and Canada; and short term programs in Nepal, Singapore and Cambodia.



As a La Trobe nursing student, you'll learn how to care for people of all ages and make ethical, clinical decisions with a compassionate and caring approach. You'll also develop important professional skills such as time management, team leadership and caseload management. Our supportive and experienced teaching staff operate an open-door policy to make sure you get the most out of your study.

## BACHELOR OF NURSING (PRE-REGISTRATION)

You'll study long-term chronic illness care, Indigenous health, biosciences, emergency healthcare and mental health care. In first year, your hands-on experience begins at our on-campus clinical learning units. In all three years, you'll practice in real-world hospital and healthcare settings.

Melbourne students can undertake placements in leading Victorian hospitals including The Alfred, The Austin, Royal Melbourne and The Northern.

Regional students undertake clinical placements at a selection of our 100+ industry partners including Albury Wodonga Health, Bendigo Health, Goulburn Valley Health, and Mildura Base Hospital.

Regional students may be able to apply for specialist placements such as remote health in the Northern Territory or paediatric nursing at the Royal Children's Hospital.

## FIRST YEAR SUBJECTS

The following are the first-year subjects for the 2024 intake. They may change for the 2025 intake.

### Semester 1

Human Biosciences A  
First Nations Health  
Healthcare Australia  
Professional Practice in Nursing 1.

### Semester 2

Human Biosciences B  
Professional Practice in Nursing 2  
Professional Studies in Nursing.

## FIRST NATIONS AUSTRALIAN ENTRY

This is an alternative entry into the Bachelor of Nursing for applicants who are First Nations Australian. Choose the 'First Nation Australian' tagged course via VTAC.

## COMBINED DEGREES

Applicants can apply to combine the Bachelor of Nursing with one of the following degrees:

- Bachelor of Psychological Science
- Bachelor of Midwifery

## PROFESSIONAL ACCREDITATION

The Bachelor of Nursing (Pre-Registration) is accredited by the Australian Nursing and Midwifery Accreditation Council (ANMAC). Graduates of the Bachelor of Nursing (Pre-Registration) may be eligible to apply for registration with the Nursing and Midwifery Board of Australia (NMBA).

## HOW TO APPLY

Apply via the [Victorian Tertiary Admissions Centre](#). Applications will open for Year 12 students on 29 July 2024.

## COURSE INFORMATION

Click [here](#)

Course	Units 3 and 4 VCE subjects	Campus
Bachelor of Nursing (Pre-Registration) 3-years	Prerequisite: minimum study score of 30 in English (EAL) or 25 in any other English.	Albury-Wodonga Bendigo Melbourne Shepparton Mildura

## PATHWAYS

The following are examples of pathways into the Bachelor of Nursing (Pre-Registration).

### Via the Tertiary Preparation Program

#### STEP 1: Tertiary Preparation Program

Complete the 1-year [Tertiary Preparation Program](#) online. Your grades will give you a 'La Trobe Entrance Score'.

#### STEP 2: Bachelor of Nursing (Pre-Registration)

Apply for the Bachelor of Nursing. If your La Trobe Entrance Score is high enough, and you meet the English Language requirements, you may receive an offer for the degree.

### Via a La Trobe University Diploma course

#### STEP 1: Diploma of Rural Health

Complete the 1-year Diploma at La Trobe and select the nursing stream.

#### STEP 2: Bachelor of Nursing (Pre-Registration)

Apply for the Bachelor of Nursing. You may be able to gain credit for the first year of the degree.

### Via a VET pathway

#### STEP 1: Diploma of Nursing

Complete the 2-year Diploma of Nursing at a Registered Training Organisation such as Wodonga TAFE or TAFE NSW.

#### STEP 2: Register

Register to become an accredited Enrolled Nurse with the Nursing and Midwifery Board of Australia.

#### STEP 3: Bachelor of Nursing (Enrolled Nurse Pathway)

Apply for the Bachelor of Nursing (Enrolled Nurse Pathway). You may be able to gain credit for the first year of the degree.

## SELECTION RANK ADJUSTMENTS

If eligible, La Trobe will add adjustment factors to your VCE aggregate to recalculate your ATAR and boost your [selection rank](#) for entry into their courses. For example, your ATAR might be 60 but after adjustment factors are added, your selection rank might be 72.5. Adjustment factors are calculated from initiatives such as the following. Note – if you're eligible for multiple initiatives, the maximum aggregate adjustments you can receive is 20.

### Subject adjustments

Applicants can receive a maximum of 12 adjustments for high achievement in eligible Units 3 and 4 subjects. In the 2024 intake, the eligible subjects were: Health And Human Development, any Mathematics, Physical Education, any Science, and LOTE. Adjustments for the 2025 intake will be advertised via [VTAC](#) from 29 July 2024.

### Priority Access Program

A maximum of 15 adjustment factors are awarded to applicants who fall within any of the following categories: priority school (5), priority campus (5), regional school (5).

Read about the program [here](#). Note – the Priority Access Program is undergoing a review for the 2025 intake.

### Special Entry Access Scheme (SEAS)

Applicants can receive a maximum of 20 adjustment factors for disadvantage that has impacted their education. Applicants can apply for this scheme via the Victorian Tertiary Admissions Centre (VTAC) between 29 July – 11 October 2024 after creating their VTAC account and adding course preferences.

### Elite Athlete ATAR Adjustment

Applicants can receive up to 5 aggregate adjustments. Click [here](#) for information.

### Rural and Regional Student Access Scheme (RRSAS)

Students residing in an area classified as RA2 or higher are eligible for the following adjustments:

Regional students applying to courses at the Melbourne (Bundoora) campus will receive 5 aggregate points.

Regional students applying to courses at Bendigo, Albury Wodonga, Mildura and Shepparton will receive 10 aggregate points.

## ATAR FREE EARLY ENTRY PROGRAM

Applications for the [Year 11 Conditional Entry](#) stream of the [Aspire Early Entry](#) program will open on 15 April and close on 6 September 2024. Selection is based on your Year 11 grades and a school endorsement. Successful applicants will receive a conditional 'ATAR free' offer.

To receive a formal offer, applicants will need to complete Year 12, meet course prerequisites, and preference the course in their VTAC account correctly.

## GUARANTEED ATAR PROGRAMS

The following programs provide a guaranteed ATAR for the Bachelor of Nursing (Pre-Registration). Note: the ATARs listed below are relevant for the 2024 intake and may change for the 2025 intake.

### La Trobe Aspire Early Entry Program

Applications for the [Community Contribution](#) stream of the [Aspire Early Entry](#) program will open on 15 April 2024 and close on 6 September 2024. Selection is based on a statement about your community service, volunteering, or leadership. Successful applicants will unlock the following 'Aspire ATAR' for the Bachelor of Nursing (Pre-Registration).

Regional campuses: 50  
Melbourne campus: 55

### Regional Benefits Program

This [program](#) is for students who study at a regional school and is applicable to the Bachelor of Nursing (Pre-Registration) at the regional campuses. The guaranteed ATAR is 80. You will be automatically considered for the program once you apply for the course via VTAC or UAC.

# VICTORIA UNIVERSITY

Course is fully accredited.

Partnerships with over 200 clinical agencies.

800 professional practice hours, 140 clinical simulation hours.

Over 90% of nursing graduates employed within 4-months of graduation and 70% full-time.



Pursue a stimulating and diverse career as a healthcare professional with a Bachelor of Nursing from Victoria University. Studying nursing at VU will equip you with a broad set of skills to work as a general or mental health nurse. This course will open doors to a wide range of career opportunities in healthcare.

## BACHELOR OF NURSING

VU's Bachelor of Nursing will ensure that you have sound scientific knowledge and skills, as well as hands-on experience. You'll participate in simulation learning using modern technology, practising your skills in a safe environment before you work with real patients.

Your practical experience alongside expert clinicians and nurses will have you ready to register and work as a Division 1 Registered Nurse. You'll join a cohort of VU graduates known for their extensive practical experience.

## CLINICAL EXPERIENCE

We have strong industry connections with Western Health and Werribee Mercy Hospital. We also have partnerships with over 200 clinical agencies. You'll gain valuable industry experience in your practical placements at some of these agencies.

## FIRST YEAR SUBJECTS

The following are the first-year subjects for the 2024 intake. They may change for the 2025 intake.

### Semester 1

The Professional Nurse and Midwife  
Anatomy and Physiology 1  
Foundations in Nursing 1  
Indigenous Health and Wellbeing.

### Semester 2

Primary Health Care Across the Lifespan  
Anatomy and Physiology 2  
Foundations in Nursing 2  
Professional Experience Placement 1  
Nursing.

## VU MOONDANI BALLUK ABORIGINAL ADMISSION PROGRAM

Aboriginal and Torres Strait Islander students may be able to apply for the Bachelor of Nursing via this [program](#). Fill out the application form [here](#) and Moondani Balluk staff will contact you with information.

## COMBINED DEGREE

Applicants can apply to combine the Bachelor of Nursing with the Bachelor of Midwifery.

## VU BLOCK MODEL

[VU Block Model](#): revolutionary way of learning and teaching unique to VU.

## PROFESSIONAL ACCREDITATION

The Bachelor of Nursing is accredited by the Australian Nursing and Midwifery Accreditation Council (ANMAC). Graduates of the Bachelor of Nursing may be eligible to apply for registration with the Nursing and Midwifery Board of Australia (NMBA).

## HOW TO APPLY

Apply via the [Victorian Tertiary Admissions Centre](#). Applications will open for Year 12 students on 29 July 2024.

## COURSE INFORMATION

Click [here](#)

Course	Units 3 and 4 VCE subjects	Campus
Bachelor of Nursing 3-years	Prerequisites: minimum study scores of 30 in English (EAL) or 25 in any other English, plus a minimum study score of at least 20 in one of the following: Biology, Chemistry, Health & Human Development, any Mathematics, or Psychology.	St Albans

## PATHWAYS

The following are examples of pathways into the Bachelor of Nursing.

### Via the Victoria University Polytechnic

#### STEP 1: Diploma of Nursing

Complete the 2-year Diploma of Nursing at Victoria University Polytechnic.

#### STEP 2: Register

Register to become an accredited Enrolled Nurse with the Nursing and Midwifery Board of Australia.

#### STEP 3: Bachelor of Nursing

Apply for the Bachelor of Nursing. You may be able to gain credit for the first year of the degree.

### Via a non-partner VET RTO

#### STEP 1: Diploma of Nursing

Complete the 2-year Diploma of Nursing at another Registered Training Organisation. The course must be approved by the Nursing and Midwifery Board of Australia.

#### STEP 2: Register

Register to become an accredited Enrolled Nurse with the Nursing and Midwifery Board of Australia.

#### STEP 3: Bachelor of Nursing

Apply for the Bachelor of Nursing. You may be able to gain credit for the first year of the degree.

### Via a higher education pathway

#### STEP 1: Diploma of Nursing

Complete at least one semester of an Australian Higher Education award (or equivalent) in a Health Sciences related discipline.

#### STEP 2: Bachelor of Nursing

Apply for the Bachelor of Nursing.

## SELECTION RANK ADJUSTMENTS

If eligible, Victoria University will add adjustment factors to your VCE aggregate to recalculate your ATAR and boost your [selection rank](#) for entry into their courses. Adjustment factors are calculated from initiatives such as the following. Note - if you're eligible for multiple initiatives, the maximum aggregate adjustments you can be awarded is 20.

### Subject adjustments

Applicants can receive up to 20 adjustments for high achievement in eligible Units 3 and 4 subjects. In the 2024 intake, the eligible subjects were: English, Biology, Chemistry, Health & Human Development, any Mathematics, Physics, and Psychology. Eligible subjects for the 2025 intake will be advertised via [VTAC](#) from 29 July 2024.

### Special Entry Access Scheme (SEAS)

Applicants can receive adjustment points for short or long-term disadvantage. Applicants can apply for this scheme via the Victorian Tertiary Admissions Centre (VTAC) between 29 July – 11 October 2024 after creating their VTAC account and adding course preferences.

### Under-represented Discipline

Men applying for the Bachelor of Nursing are eligible to receive additional consideration. Apply via SEAS and tick yes for Category 1.

### Location adjustment

Applicants may receive adjustments based on their location or where they went to school. Apply via SEAS and tick yes for Category 1.

### Elite Athlete ATAR Adjustment

Applicants can receive up to 5 aggregate adjustments. Click [here](#) for information.

## EARLY ENTRY PROGRAM

Applications for the [VU Guaranteed](#) program will open later in the year. Selection is based on answers to four questions. Successful applicants will receive 5 aggregate adjustments towards the Bachelor of Nursing.

## EXAMPLE

### Meet Noah

Noah is keen to study the Bachelor of Nursing at VU as he believes the VU Block Model of learning will best suit his learning style. He wants to maximise his chances of getting an offer for Nursing at VU so he does the following:

### Victorian Tertiary Admissions Centre (VTAC)

He formally applies for the Bachelor of Nursing via VTAC. Applications open 29 July 2024. He completes the Nursing and Midwifery English Language form in his VTAC account.

### VU Guaranteed

He is successful in his application for the VU Guaranteed program. This gives him 5 adjustments towards his selection rank.

### Special Education Access Scheme (SEAS)

He completes an application for SEAS via VTAC so he is eligible for equity adjustments towards his selection rank. He is eligible for Category 1 (Personal Information and Location). As he is a male, he will receive additional consideration through the selection process.

### Backup course

He places the Diploma of Nursing at Victoria University Polytechnic on his VTAC preference list as a back-up course in case he doesn't receive an offer for the Bachelor of Nursing.

### Outcome

Noah received a competitive ATAR and met the entry requirements for the Bachelor of Nursing. His selection rank was higher than the lowest rank for the December round and he received a formal offer for the course via VTAC.

# FEDERATION UNIVERSITY

Course is fully accredited.

Partnerships with over 200 clinical agencies.

Spend at least 800 hours during your degree in real healthcare settings across Victoria.

Combine study and travel for a unique overseas experience with the help of our Global Professional School. In 2023, 16 Federation nursing students did their clinical placements in Nepal through the New Colombo Plan Mobility program. This Australian Government initiative supports undergraduates to study in 40 locations in the Indo-Pacific region.



You want to improve people's lives and help them during difficult times. You want a degree where you spend time learning in a variety of clinical settings and a career where you are constantly updating your skills. We'll support you as you become a registered nurse. You'll learn to deliver the highest quality care that's focused on the person and use reasoning and evidence-based care to improve your patients' outcomes.

## BACHELOR OF NURSING

Your subjects include working with diverse communities, mental health, medical and surgical nursing, and palliative care. You'll also learn skills like leadership and management to give you even more confidence when you start your career.

Your options will be wide when you graduate. You may choose to work in emergency illness, mental health, long-term care, intercultural health or population health. Wherever you work, chances are your career in nursing will be challenging, stimulating and rewarding. You may even decide to further your studies into a specialised nursing area including midwifery or paramedicine.

## CLINICAL PLACEMENTS

Our connections to hospitals and healthcare partners across Victoria will set you up for success with placements and employment opportunities. We have long-established partnerships with organisations including:

Ballarat Community Health  
Grampians Health  
Dhelkaya Health  
Monash Health  
St John of God Health Care  
Knox Private Hospital  
Bass Coast Health  
Latrobe Regional Hospital  
Gippsland hospitals (West Gippsland, Central Gippsland and Bairnsdale).

## DEFERMENT

Applicants are unable to defer their offer.

## COMBINED DEGREE

Applicants can apply to combine the Bachelor of Nursing with the Bachelor of Midwifery.

## BLENDED DELIVERY

Domestic students will mostly study online but will be on campus for intensive blocks each semester.

## PROFESSIONAL ACCREDITATION

The Bachelor of Nursing is accredited by the Australian Nursing and Midwifery Accreditation Council (ANMAC). Graduates of the Bachelor of Nursing may be eligible to apply for registration with the Nursing and Midwifery Board of Australia (NMBA).

## HOW TO APPLY

Apply via the [Victorian Tertiary Admissions Centre](#). Applications will open for Year 12 students on 29 July 2024.

## COURSE INFORMATION

Click [here](#)

Course	Units 3 and 4 VCE subjects	Campus
Bachelor of Nursing	Prerequisite: minimum study score of 25 in any English.	Ballarat - Mt Helen Berwick Gippsland - Churchill
Bachelor of Nursing (Blended Delivery)	Prerequisite: minimum study score of 25 in any English.	Ballarat - Mt Helen Berwick Gippsland - Churchill Wonthaggi
Diploma of Nursing / Bachelor of Nursing	Interview. Pre-training review. Language, literacy, and numeracy assessment.	Ballarat - Mt Helen Wimmera

# FEDERATION UNIVERSITY

## PATHWAYS

The following are examples of pathways into the Bachelor of Nursing.

### Via a VET pathway at Federation University

#### STEP 1: Diploma of Nursing

Complete the 2-year [Diploma of Nursing](#) at Federation University.

#### STEP 2: Register

Register to become an accredited Enrolled Nurse with the Nursing and Midwifery Board of Australia.

#### STEP 3: Bachelor of Nursing

Apply for the Bachelor of Nursing. You may be able to gain credit for the first year of the degree.

### Via a non-partner VET RTO

#### STEP 1: Diploma of Nursing

Complete the 2-year Diploma of Nursing at another Registered Training Organisation. The course must be approved by the Nursing and Midwifery Board of Australia.

#### STEP 2: Register

Register to become an accredited Enrolled Nurse with the Nursing and Midwifery Board of Australia.

#### STEP 3: Bachelor of Nursing

Apply for the Bachelor of Nursing. You may be able to gain credit for the first year of the degree.

## SELECTION RANK ADJUSTMENTS

If eligible, FedUni will add adjustment factors to your VCE aggregate to recalculate your ATAR and boost your [selection rank](#) for entry into their courses. For example, your ATAR might be 60 but after adjustment factors are added, your selection rank might be 68. Adjustment factors are calculated from initiatives such as the following.

### Subject adjustments

Applicants can receive up to 5 adjustments for high achievement in eligible Units 3 and 4 subjects. In the 2024 intake, the eligible subjects were: Biology, Chemistry, Health And Human Development, any Mathematics, and Physics. Eligible subjects for the 2025 intake will be advertised via [VTAC](#) from 29 July 2024.

### Access and Equity Scheme

Applicants can apply for this scheme via the Special Entry Access Scheme (SEAS). Applicants apply for SEAS after creating their VTAC account and adding course preferences. Across all of the SEAS categories Federation University will award a maximum adjustment of 15 aggregate points per applicant. Applications will open on 29 July 2024.

The following are examples of adjustments and the maximum aggregate per category:

#### Category 1: Personal Information and Location

- Indigenous applicants: 15
- Gender (men applying for nursing): 5
- Living or school postcode: 10
- Under-represented school: 10
- First in family to attend uni: 5
- Non-English speaking background: 5

#### Category 2: Financial Disadvantage

- Up to 10 adjustments

#### Category 3: Disability or Medical Condition

- Up to 10 adjustments

#### Category 4: Difficult Circumstances

- Up to 10 adjustments.

## GUARANTEED ATAR

The [guaranteed ATAR](#) for the Bachelor of Nursing at FedUni is 70.

## EARLY ENTRY PROGRAM

Applications for the [Early Offer](#) program are now open and will close on 1 December. Selection is based on an online application. Successful applicants will receive a conditional offer to the course.

To receive a formal offer, applicants will need to complete Year 12, meet course prerequisites, achieve an ATAR of at least 70, and preference the course in their VTAC account correctly.

## FIRST YEAR SUBJECTS

The following are the first-year subjects for the 2024 intake. They may change for the 2025 intake.

### Semester 1

Anatomy & Physiology for Health Professionals 1  
Communication for Health Professionals  
Nursing Practice 1: Introduction to Person-Centred Nursing Practice.  
Nursing Context 3: Professional, Legal, Ethical, Decision-Making in Person Centred Care.

### Semester 2

Anatomy & Physiology for Health Professionals 2  
Research 1: Introduction to Evidence-Based Practice and Research.  
Primary Health 1: Determinates of Health.  
Communication for Health Professionals  
Nursing Practice 2: Nursing Assessment and Management.



# MONASH UNIVERSITY

Nursing ranked number 6 in the world.

Course is fully accredited.

Undertake clinical placements in Sweden or the UK.

Links to world-class medical researchers and major teaching hospitals.

Founding member of the Psi Zeta at-Large chapter of Sigma.

Research ranking of 4 with the ERA (above world standard).



Monash Nursing graduates are sought after worldwide due to the quality of evidence-based teaching and clinical practice experience they receive. The Bachelor of Nursing provides students with the knowledge and clinical skills to provide high-quality nursing care. You will also have the scope to provide care in multiple settings, including acute care, primary health care, mental health and health promotion.

## BACHELOR OF NURSING

Throughout the course you will connect theory to clinical practice, with plenty of opportunities for clinical experience in diverse settings throughout Victoria. You may also take up the opportunity to study and undertake clinical placements in Sweden or the UK, through student exchange programs.

Your clinical and professional skills will be reinforced through time spent working with excellent mentors and students enrolled in other health science courses (occupational therapy, physiotherapy, paramedic practice, medical imaging, nutrition and dietetics, social work), enabling you to develop the important capacity for interdisciplinary service delivery.

## FIRST YEAR SUBJECTS

The following are the first-year subjects for the 2024 intake. They may change for the 2025 intake.

### Semester 1

Communication and scholarship in nursing and midwifery.

Indigenous health and cultural safety in healthcare practice.

Fundamental skills and knowledge for nursing and midwifery practice 1.

### Semester 2

Law, ethics and leadership in nursing and midwifery.

Fundamental skills and knowledge for nursing and midwifery practice 2.  
Elective.

## SCHOLARS PROGRAM

Very high achieving students can apply for access to the Scholars Program, which provides a range of extracurricular opportunities to engage with research staff and the advanced technical facilities used for research.

## COMBINED DEGREE

Applicants can apply to combine the Bachelor of Nursing with the Bachelor of Midwifery.

## PROFESSIONAL ACCREDITATION

The Bachelor of Nursing is accredited by the Australian Nursing and Midwifery Accreditation Council (ANMAC). Graduates of the Bachelor of Nursing may be eligible to apply for registration with the Nursing and Midwifery Board of Australia (NMBA).

## HOW TO APPLY

Apply via the [Victorian Tertiary Admissions Centre](#). Applications will open for Year 12 students on 29 July 2024.

## COURSE INFORMATION

[Click here](#)

Course	Prerequisites	Campus
Bachelor of Nursing (First Year Entry)	Minimum study score of 27 in English (EAL) or 25 in any other English, plus completion of Units 1 and 2 (any combination) or Units 3 and 4 of Mathematics (any).	Clayton Peninsula
Bachelor of Nursing (Indigenous Entry)	Minimum study score of 27 in English (EAL) or 25 in any other English, plus completion of Units 1 and 2 (any combination) or Units 3 and 4 of Mathematics (any). Supplementary form.	Clayton
Bachelor of Nursing (Scholars Program)	Minimum study score of 27 in English (EAL) or 25 in any other English, plus completion of Units 1 and 2 (any combination) or Units 3 and 4 of Mathematics (any).	Clayton Peninsula

# MONASH UNIVERSITY

## PATHWAYS

The following are examples of pathways into the Bachelor of Nursing.

### Via a university diploma pathway at Monash

#### STEP 1

Complete the 1-year Diploma of Tertiary Studies – Nursing, at Monash University.

#### STEP 2: Bachelor of Nursing

Providing academic requirements are met, applicants will be eligible to receive up to one year of credit into the Bachelor of Nursing course at the Peninsula campus.

### Via a Diploma of Nursing pathway

#### STEP 1: Diploma of Nursing

Complete a graded 2-year Diploma of Nursing at a Registered Training Organisation. The course must be approved by the Nursing and Midwifery Board of Australia.

To be eligible for nursing at the Clayton and Peninsula campuses, achieve the following overall grades:

Clayton: at least 75%  
Peninsula: at 70%

#### STEP 2: Register

Register to become an accredited Enrolled Nurse with the Nursing and Midwifery Board of Australia.

#### STEP 3: Bachelor of Nursing

Apply for the Bachelor of Nursing. You may be able to gain credit for the first year of the degree.

## SELECTION RANK ADJUSTMENTS

If eligible, Monash will add adjustment factors to your VCE aggregate to recalculate your ATAR and boost your [selection rank](#) for entry into their courses. For example, your ATAR might be 60 but after adjustment factors are added, your selection rank might be 70. Adjustment factors are calculated from initiatives such as the following:

### Subject adjustments

Applicants can receive up to 6 adjustments for high achievement in eligible Units 3 and 4 subjects. In the 2024 intake, the eligible subjects were: Biology, Chemistry, Health & Human Development, any Mathematics, Physics, and Psychology. Eligible subjects for the 2025 intake will be advertised via [VTAC](#) from 29 July 2024.

### Elite Student Athlete and Performer Entry Scheme

Applicants can receive up to 10 ATAR points. Click [here](#) for information.

### Special Entry Access Scheme (SEAS)

Applicants can receive adjustment factors for disadvantage that has impacted their education. Applicants can apply for this scheme via the Victorian Tertiary Admissions Centre (VTAC) between 29 July – 11 October 2024 after creating their VTAC account and adding course preferences.

## GUARANTEED ATAR PROGRAMS

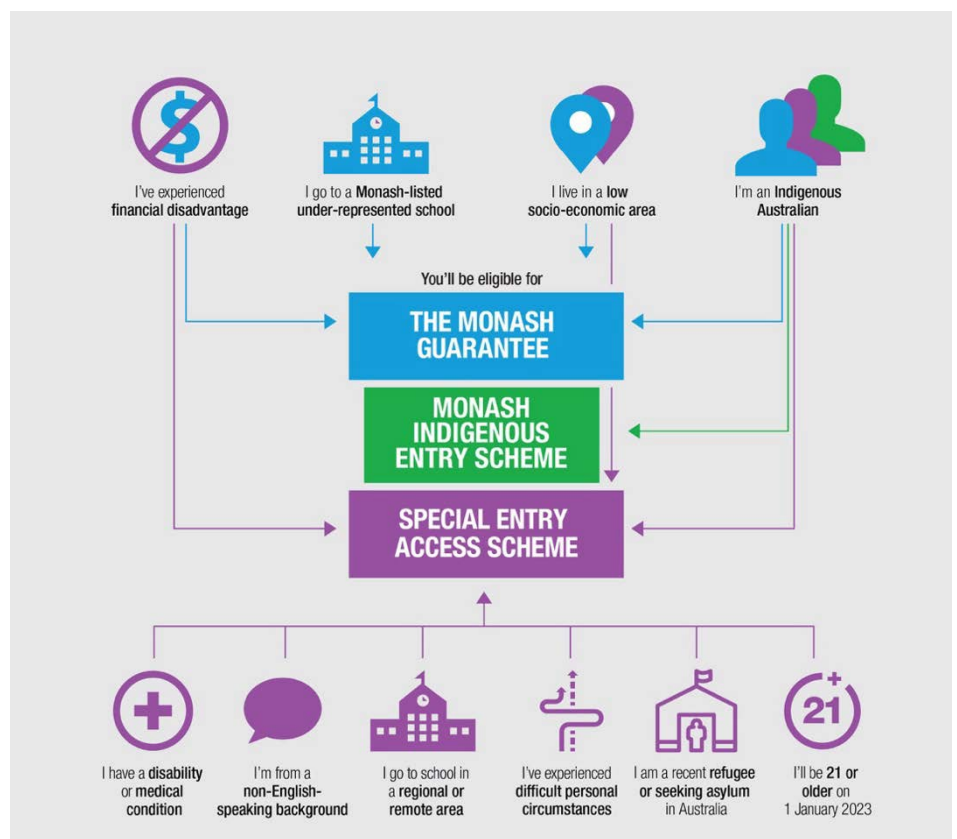
The following programs provide a guaranteed ATAR for The Bachelor of Nursing. Note: the ATARs listed below are relevant for the 2024 intake and may change for the 2025 intake.

### Monash Guarantee

Applicants eligible for the [Monash Guarantee](#) program will be guaranteed entry into the Bachelor of Nursing with an ATAR of at least 70, providing they meet entry requirements and preference the course in their VTAC preferences correctly. Applicants apply for the scheme by ticking 'yes' to SEAS Category 1 – Personal Information and Location. Applications will open on 29 July via VTAC and close on 11 October 2024.

### Monash Indigenous Entry Scheme

This is an alternative entry into the Bachelor of Nursing for applicants who are First Nations Australian. Choose the 'Indigenous Entry' tagged course via VTAC. Applicants will need to achieve a minimum ATAR of 50, meet course entry requirements, and submit a supplementary information form. Click [here](#) for information.



# HOLMESGLEN INSTITUTE

Complete 880 hours of clinical placement.

Industry partners include Epworth HealthCare, Ramsay Health Care and Healthscope.

\$5 million invested in dedicated teaching wards and simulation centres.



The Bachelor of Nursing focuses on professional nursing practice and theory and is underpinned by a philosophy of person-centred and holistic care, making our graduates highly sought after. We develop professionals who have valuable skills and knowledge, and are known for their culturally sensitive client care, safe and ethical clinical reasoning, and advanced communication skills.

## BACHELOR OF NURSING

You are prepared for practice through a combination of on-campus theory and the latest simulation activities that are delivered in our state-of-the-art simulation apartments and clinical wards.

With a focus on inter-professional learning, you will develop valuable skills to operate as part of the healthcare team. At the health precinct at our Moorabbin campus, we have invested over \$5 million to create the highest standard of health training equipment and facilities in Victoria.

## CLINICAL EXPERIENCE

Students enrolled in the Bachelor of Nursing undertake 880 hours of supervised clinical practice across the three years of the program.

## FIRST YEAR SUBJECTS

The following are the first-year subjects for the 2024 intake. They may change for the 2025 intake.

### Semester 1

Nursing 1: the individual, health and communication  
Bioscience foundations 1  
Integrated clinical practice 1  
Professional studies 1: the health context and nursing professions.

### Semester 2

Nursing 2: Foundations of care  
Bioscience foundations 2  
Integrated clinical practice 2  
Professional studies 2: law and ethics.

## PROFESSIONAL ACCREDITATION

The Bachelor of Nursing is accredited by the Australian Nursing and Midwifery Accreditation Council (ANMAC). Graduates of the Bachelor of Nursing may be eligible to apply for registration with the Nursing and Midwifery Board of Australia (NMBA).

## PATHWAY EXAMPLE

### STEP 1: Diploma of Nursing

Complete the 2-year Diploma of Nursing at Holmesglen Institute.

### STEP 2: Register

Register to become an accredited Enrolled Nurse with the Nursing and Midwifery Board of Australia.

### STEP 3: Bachelor of Nursing

Apply for the Bachelor of Nursing. Eligible applicants may be eligible for advanced standing.

Course	Prerequisites	Campus
Bachelor of Nursing 3-years	Satisfactory completion of any English; plus, completion of Units 1 and 2 (any combination) or Units 3 and 4 Mathematics (any).  Other: there is additional selection criteria for this course including a Supplementary Form.	Moorabbin

## HOW TO APPLY

Apply via the [Victorian Tertiary Admissions Centre](#). Applications will open for Year 12 students on 29 July 2024.

## COURSE INFORMATION

Click [here](#)

# TORRENS UNIVERSITY

Flinders Street Campus, Melbourne.

Complete 840 hours of clinical placement.

Small class sizes.

Study in the heart of Melbourne.



The Bachelor of Nursing will prepare you to enter a career as a Registered Nurse in the Australian healthcare environment. You will learn vital skills in assessment and clinical decision-making, person-centred care, professional communication, enquiry and research, awareness of diversity and self-care practices.

## BACHELOR OF NURSING

The course provides you with an opportunity to deliver care in multiple healthcare, industry and community settings. Delivered through contemporary and evidence-based methods, the course delivers vital skills in assessment and clinical decision-making, as well as how to put patients first.

## CLINICAL EXPERIENCE

Through your experience at our on-campus simulation hospital environment and 840 hours of clinical placements, you will develop the necessary skills and knowledge to register and confidently begin working across a variety of different healthcare and community settings.

## FIRST YEAR SUBJECTS

The following are the first-year subjects for the 2024 intake. They may change for the 2025 intake.

### Semester 1

Becoming a Nurse  
Structure and Function of the Human Body  
Self-care Practices  
Sociology of Health and Illness.

### Semester 2

Care of Persons with Chronic Conditions  
Human Biology and Disease  
Evidence-based Practice  
Health Assessment.

## FEES

Note: this is a full fee-paying course. Eligible applicants can access FEE-HELP.

## PROFESSIONAL ACCREDITATION

The Bachelor of Nursing is accredited by the Australian Nursing and Midwifery Accreditation Council (ANMAC). Graduates of the Bachelor of Nursing may be eligible to apply for registration with the Nursing and Midwifery Board of Australia (NMBA).

## PATHWAY

### STEP 1 – Diploma of Nursing

Complete the 2-year Diploma of Nursing at Torrens University.

### STEP 2: Register

Register to become an accredited Enrolled Nurse with the Nursing and Midwifery Board of Australia.

### STEP 3: Bachelor of Nursing

Apply for the Bachelor of Nursing - Enrolled Nurse. Applicants may be eligible for advanced standing.

## HOW TO APPLY

Apply via the [Victorian Tertiary Admissions Centre](#). Applications will open for Year 12 students on 29 July 2024.

## COURSE INFORMATION

Click [here](#)

Course	Prerequisites	Campus
Bachelor of Nursing 3-years	Satisfactory completion of Units 3 and 4 English.	Melbourne

# THE UNIVERSITY OF MELBOURNE

We offer the only integrated curriculum where you learn clinical skills and theory concurrently.

Teaching placements are in the largest metropolitan teaching hospitals.

Internationally recognised nursing qualification.

Ranked 11<sup>th</sup> in the world for clinical and health.

Study in the heart of Melbourne.



The Master of Nursing Science (MNSc) from the University of Melbourne is a professional master's degree that provides exceptional preparation for a nursing career. A master's degree in nursing is a portable qualification, whether you want to work locally, nationally, or internationally.

## MASTER OF NURSING SCIENCE

The University offers an accredited nursing qualification at the graduate level. A Master's in Nursing Science gives you the opportunity to transition from an undergraduate degree to a professional highly regarded nursing course.

Focussing on clinical leadership, nursing practice and research, the Master of Nursing Science will prepare you to be an active and impactful member of the nursing workforce and a conscientious global citizen.

## COURSE INFORMATION

Click [here](#).

## CLINICAL EXPERIENCE

With the University of Melbourne's close proximity to hospitals, you will be able to develop strong partnerships with institutions including:

- The Western Hospital
- The Royal Melbourne Hospital
- Peter MacCallum Cancer Centre
- The Royal Children's Hospital
- The Royal Women's Hospital
- St Vincent's
- The Austin.

Along with giving you a chance to partner with leading healthcare facilities in Melbourne, you will also have the opportunity to participate in major international clinical nursing projects which will broaden your understanding of the field.

## STEPS TO STUDY THE MASTER OF NURSING SCIENCE

### STEP 1: Choose your undergraduate degree

First, you can complete any undergraduate degree in any discipline. This will enable you to explore a variety of disciplines to inform your nursing practice and your future career based on your interests. For example, complete the 3-year Bachelor of Science or Bachelor of Biomedicine at The University of Melbourne.

### STEP 2: enter the Master of Nursing Science

Complete the Master of Nursing Science (2-years).

Course	Prerequisites – Units 3 and 4	Campus	Guaranteed ATAR
Master of Nursing Science	Detailed information on selection criteria, <a href="#">click here</a> .	Parkville	Graduate entry
Bachelor of Science	Minimum study scores of: 30 in English (EAL) or 25 in any other English; 25 in Mathematical Methods or Specialist Mathematics; and 25 in one of Biology, Chemistry or Physics.  OR: Minimum study scores of: 30 in English (EAL) or 25 in any other English; 25 in Mathematical Methods AND Specialist Mathematics.	Parkville	88.00
Bachelor of Biomedicine	Minimum study scores of: 30 in English (EAL) or 25 in any other English; 25 in Chemistry; 25 in Mathematical Methods or Specialist Mathematics.	Parkville	95.00