

# PARAMEDICINE

University courses - Victoria

MARCH 2024

CAREERS DEPARTMENT



**Catholic College**  
Wodonga *Life in Jesus*





# Introduction

This document has been developed to assist domestic Year 12 students and their families in researching undergraduate and graduate entry paramedicine courses in Victoria. Please use entry requirements and indicative ATARs listed in this document as a guide only and check university websites for updates.

**Disclaimer:** Information has been taken from university websites and the Victorian Tertiary Admissions Centre (VTAC). Universities featured in this guide reserve the right to change course information, admissions, and entry requirements at any time and without notice. For up-to-date information, check the university websites when assessing course information. **Note:** photos in this document are stock images and aren't representative of students at the universities.

Written by Sandie McKoy, March 2024  
Career Development Leader, Catholic College Wodonga



## Indicative ATAR

Please use indicative ATARs and selection ranks as a guide as they may change for future intakes.



## English prerequisite

EAL = English as an Additional Language. 'Any other English' includes English, English Language, and Literature.



## Undergraduate

This is usually your first course at university. For example - bachelor's degree.



## Graduate

This is study you do once you have graduated from a bachelor's degree. For example - Graduate Diploma.





### TASKS OF A PARAMEDIC

Paramedics are highly trained healthcare professionals who provide emergency medical care to people in need. They respond to emergency calls, assess patients' conditions, administer treatments and medications, and transport patients to hospitals or other healthcare facilities. Paramedics work as part of a team to provide life-saving care and make a positive impact on the lives of their patients and communities.

### WHY PARAMEDICS ARE AMAZING

Paramedics are amazing because they provide emergency medical care to people in their most vulnerable moments. They possess a wide range of skills, including critical thinking, problem-solving, quick decision-making, and work under high-pressure situations to save lives. Their dedication and commitment to their patients and profession make them true heroes in their communities.

### THINGS YOU NEED TO CONSIDER

Paramedics face various risks, such as exposure to infectious diseases, physical injuries, and psychological trauma. They work in high-stress environments, face hazardous situations like vehicle accidents, violent behaviour, and hazardous materials. Long hours can lead to fatigue, affecting their well-being. They also experience emotional challenges, witness human suffering, and may experience compassion fatigue or PTSD.



# How to become a Paramedic in Victoria

## STEP 1: self assessment

Assess if paramedicine is an appropriate profession to pursue. Once you start a course, you will be required to pass a medical and fitness assessment with an agency appointed by Ambulance Victoria. If you don't pass the assessment, you won't be able to qualify as a paramedic. You will also be required to have a full drivers licence or have held a probationary licence as P2 for at least a year to work as a paramedic. If you believe you may have an issue with either of the above, you may need to consider if you'd be better suited to another profession, or if you should apply for paramedicine at a later time.

## STEP 2: Secondary school studies

Study VCE subjects such as Biology, Health And Human Development, Psychology, Physical Education, Mathematics, and LOTE. Achieve a competitive ATAR.

## STEP 3: be accepted into an accredited paramedicine degree

Be accepted into an accredited undergraduate or graduate entry degree at one of the following universities. You will need to meet English language and academic entry requirements for course admission.

Australian Catholic University  
La Trobe University  
Victoria University  
Monash University  
Federation University

## STEP 4: complete the paramedicine degree

Once you start your course, you will need to meet inherent requirements (e.g., communication skills), get or prove you have certain immunisations, pass Police Record and Working with Children checks, obtain a First Aid certificate, and pass a medical and fitness assessment (this may cost around \$500). You will also need to purchase uniform/s for your placements.

## STEP 5: Registration

Register with the Paramedicine Board of Australia via the Australian Health Practitioner Regulation Agency (AHPRA). Renew your registration each year and ensure you meet the registration standards (i.e., continuing professional development hours).

## STEP 6 (optional): Graduate Ambulance Paramedicine Program

Apply for the Graduate Ambulance Paramedicine program at Ambulance Victoria. Graduate after the first year of employment as a Qualified Ambulance Paramedic with Ambulance Victoria.

## STEP 6: Further study and training

Undertake further study and training to specialise in roles such as: Air Ambulance Paramedic, Aeromedical and Retrieval, Clinical Instructor, Wilderness Response Paramedic, and Mobile Intensive Care Ambulance (MICA) Paramedic. You can also undertake additional study to become a [Paramedic Practitioner or Community Paramedic](#) and work in wider healthcare systems outside of ambulances services.

# What ATAR will I need?

When it comes to the ATAR, there are three ways you can gain direct entry into an undergraduate entry paramedicine degree in Victoria – achieving a selection rank above the lowest rank for the relevant intake, achieving above the guaranteed ATAR, or receiving a place in the ACU Guarantee program.

## SELECTION RANK

Universities use the 'selection rank' when assessing course applications.

The selection rank is your ATAR plus any adjustment factors taken into consideration by the university (e.g., equity and academic adjustments).

Adjustment factors are added to your combined study scores (VCE aggregate) and your ATAR is re-ranked.

Your selection rank will be different for each course at each university as each institute uses their own adjustment programs.

You won't know what your selection rank is, but you'll need to achieve a rank above the 'lowest selection rank' for the relevant intake year.

Learn about the selection rank and ATAR profiles via this [video](#).

## GUARANTEED ATAR

The following universities have a 'guaranteed ATAR' program.

The guaranteed ATARs for paramedicine listed below are relevant for the 2024 intake and may change for the 2025 intake.

### La Trobe University

#### [Aspire Community Contribution Program](#)

Bendigo: 50

Albury-Wodonga: 50

#### [Regional Benefits Program\\*](#)

Bendigo campus – 80

### Monash University

#### [Monash Guarantee program \\*](#)

Peninsula campus – 76

#### [Monash Indigenous Entry Scheme\\*](#)

Peninsula campus – 50

\*Note – these programs are only available to eligible applicants.

## NO ATAR

Australian Catholic University offers the Bachelor of Paramedicine at the Melbourne campus and the Bachelor of Nursing / Bachelor of Paramedicine at the Ballarat campus.

They have an early entry program called '[ACU Guarantee](#)'. Successful applicants can receive a conditional 'ATAR free' offer for the course through this program.

The University calculates a selection rank using your Year 11 grades. The selection rank can be boosted through providing up to three personal statements.

The conditions of the early offer program are successfully completing Year 12, achieving course prerequisites, and ordering your VTAC preferences correctly.

Applications open 22 July 2024.

# Not ready for uni?

## VET COURSES

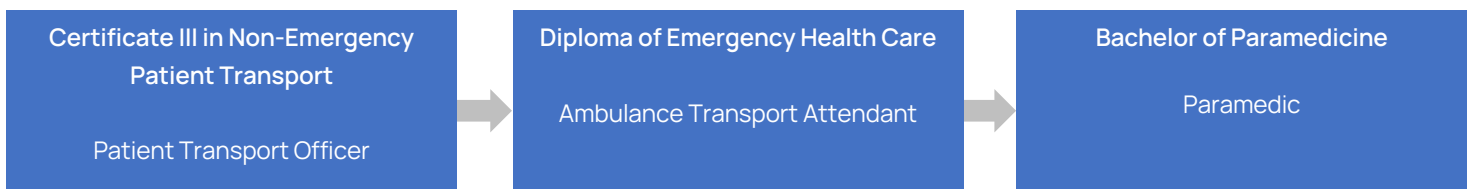
Vocational Education and Training (VET) is an amazing way to start your paramedicine journey. You can study a variety of courses related to supporting people in out of hospital care through studying at a registered training organisation. Not only will you engage in industry experience, you'll be qualified to work in that industry or role while you study at uni. The following are three VET qualifications you can explore.

You can search for courses and providers via the [Victorian Skills Gateway](#).

COURSE 1	COURSE 2	COURSE 3
<p><b>What is the course?</b></p> <p>Certificate III in Non-Emergency Patient Transport.</p> <p><b>What will I be qualified to do?</b></p> <p>You will be qualified to work as a Patient Transport Officer. You will transport patients (non-emergency) to places such as hospitals, day care surgeries, and aircrafts.</p> <p><b>How long will it take to complete?</b></p> <p>6 – 12 months.</p>	<p><b>What is the course?</b></p> <p>Certificate IV in Health Care.</p> <p><b>What will I be qualified to do?</b></p> <p>You will be qualified to work as a Basic Life Support Medic and will provide patient assessment, health care and transport services (non-emergency patients).</p> <p><b>How long will it take to complete?</b></p> <p>12 – 18 months.</p>	<p><b>What is the course?</b></p> <p>Diploma of Emergency Health Care.</p> <p><b>What will I be qualified to do?</b></p> <p>You will qualify as an Advanced Life Support Medic and will be qualified to work as an Ambulance Transport Attendant. You will provide patient assessment, health care, and transport services (non-emergency). This course can provide a pathway into university courses.</p> <p><b>How long will it take to complete?</b></p> <p>Around 12-months.</p>

## PATHWAY FROM VET TO UNIVERSITY

If you'd like to take a VET pathway into an undergraduate paramedicine degree at university, the following is a suggested pathway:



## BECOME A FIRST RESPONDER

The following jobs at Ambulance Victoria don't require university study: "First Responders support Ambulance Victoria's emergency medical response in remote and rural communities throughout Victoria.

Our First Responders, Ambulance Community Officers (ACOs) and Community Emergency Response Teams (CERTs), provide timely response to medical emergencies in rural areas through early life saving intervention and care of patients as well as participating in community engagement." Read about these jobs via the Ambulance Victoria [website](#).

# Course Summary - University

This page lists the paramedicine courses you can apply for at Victorian universities.  
The rest of the document will give information about the courses at each university.

## LA (Lowest ATAR)

Lowest ATAR to receive entry into the course excluding any adjustment factors for the 2024 January intake (VTAC applicants).

## LSR (Lowest Selection Rank)

Lowest selection rank inclusive of ATAR + adjustment factors to receive entry into the course for the 2024 January intake (VTAC applicants).

## L/N

Not published: lowest ATAR for the 2024 January intake.

## UNDERGRADUATE ENTRY

University	Course	Campus	LA	LSR
Australian Catholic University	Bachelor of Paramedicine	Melbourne	80.05	88.00
	Bachelor of Nursing / Bachelor of Paramedicine	Ballarat	72.80	80.10
La Trobe University	Bachelor of Paramedic Practice with Honours	Bendigo	51.25	65.15
		Albury-Wodonga	53.05	65.40
	Bachelor of Paramedic Practice with Honours (First Nations Australian Entry)	Bendigo	L/N	L/N
		Albury-Wodonga	L/N	L/N
Victoria University	Bachelor of Paramedicine	St Albans	66.35	79.15
Monash University	Bachelor of Paramedicine	Peninsula	73.35	83.35
	Bachelor of Paramedicine (Indigenous Entry)	Peninsula	50.00	

## GRADUATE ENTRY

University	Course	Campus
Federation University	Graduate Diploma of Paramedicine	Ballarat - Mt Helen Gippsland - Chisholm

# AUSTRALIAN CATHOLIC UNIVERSITY

Offers the only continuing Bachelor of Nursing / Bachelor of Paramedicine course in Australia.

Largest paramedicine degree program in Australia.

Honours year available to high achieving graduates.

Overseas study is available.

Ranked equal first for nursing research by ERA

In the top 50 for nursing worldwide by the Academic Ranking of World Universities.



As a paramedicine graduate, you'll be eligible to work with emergency ambulance services in Australia, as well as some international ambulance and health organisations. With further study, you can also go on to become an intensive care paramedic, clinical instructor, ambulance service manager, flight paramedic, special operations team rescue paramedic, and more.

## SINGLE DEGREE

### Bachelor of Paramedicine

It's an exciting time for paramedicine. As one of the fastest evolving health professions, ACU aims to be at the forefront of change and creating paramedics for the future. Students will undertake five clinical practice units in acute health care settings throughout the course. As part of your course, you will be placed in a range of organisations to integrate the theory you learn with practical workplace experiences (placements).

## COMBINED DEGREE

### Bachelor of Nursing / Bachelor of Paramedicine

This double degree will allow you to graduate with two qualifications. Not only will you gain the skills and knowledge needed to become a registered nurse but you will also gain the ability to work as a paramedic. Clinical experience forms an integral part of the course. Students will undertake six units of nursing practice and three units of Paramedicine practice in a variety of health care environments.

Course	Prerequisites - Units 3 and 4	Campus
Bachelor of Paramedicine	Minimum study score of 30 in English (EAL) or 25 in any other English.	Melbourne
Bachelor of Nursing / Bachelor of Paramedicine	Minimum study score of 30 in English (EAL) or 25 in any other English.	Ballarat

## ABORIGINAL AND TORRES STRAIT ISLANDER PROGRAM

If you identify as Aboriginal and/or Torres Strait Islander through VTAC, you will be invited by ACU to take part in an interview. You may receive an offer based on your potential to succeed. Click [here](#).

## PROFESSIONAL ACCREDITATION

The Bachelor of Paramedicine is currently accredited (with conditions) by the [Paramedicine Board of Australia](#).

## HONOURS

An honours year is available to meritorious students, with a grade point average of 5.5, who meet the admission requirements for the Bachelor of Paramedicine (Honours).

## HOW TO APPLY

Apply via the [Victorian Tertiary Admissions Centre](#). Applications will open for Year 12 students on 29 July 2024.

## COURSE INFORMATION

Click [here](#)



## PATHWAY EXAMPLES

The following are pathway options if you haven't met the requirements for direct entry into the Bachelor of Paramedicine.

### Via an ACU enabling course

#### STEP 1: University pathway

Complete the 40-week Foundation Studies Program at the ACU Melbourne campus or online. Achieve a GPA of at least 6.28.

#### STEP 2: Bachelor of Paramedicine

Apply for the 3-year Bachelor of Paramedicine.

### Via a VET Pathway

#### STEP 1: Certificate III course

Complete a competency based and graded Certificate III such as the Certificate III in Non-Emergency Patient Transport.

#### STEP 2: Bachelor of Paramedicine

Apply for the 3-year Bachelor of Paramedicine. You'll need to meet the minimum entry requirements and subject prerequisites for the course.

### Via a higher education pathway

#### STEP 1: university study

Complete at least two units of AQF recognised study at Bachelor level or above. You will be assigned a selection rank on your study level, duration and grade point average.

#### STEP 2: Bachelor of Paramedicine

Apply for the 3-year Bachelor of Paramedicine. You'll need to meet the minimum entry requirements and subject prerequisites for the course.

## SELECTION RANK ADJUSTMENTS

If eligible, ACU will add adjustment factors to your VCE aggregate to recalculate your ATAR and boost your [selection rank](#) for entry into their courses. Adjustment factors are calculated from initiatives such as the following. Note - if you're eligible for multiple initiatives, the maximum aggregate adjustments you can be awarded is 12.

### ACU Subject Program

Applicants can receive up to 5 adjustment factors for high achievement in eligible Units 3 and 4 subjects. In the 2024 intake, the eligible subjects were Biology, Chemistry, any English, Health And Human Development, Mathematical Methods, Specialist Mathematics, and Psychology. Eligible subjects for the 2025 intake will be advertised via [VTAC](#) from 29 July 2024.

### Elite Athlete and Performers Program

Eligible applicants will receive up to 5 adjustment factors.

### Schools Relationship Program, Campus Program, and Regional Schools Program

Eligible applicants will receive a maximum of 5 adjustment factors across these three access schemes.

### Special Entry Access Scheme

Applicants can receive adjustment points for short or long-term disadvantage. Applicants can apply for this scheme via the Victorian Tertiary Admissions Centre (VTAC) between 29 July - 11 October 2024 after creating their VTAC account and adding course preferences.

Read about the above programs via this [link](#).

### Youth Ministry

Applicants who studied Youth Ministry in Year 12 at school are eligible for 5 adjustments.

## EARLY ENTRY PROGRAM

The [ACU Guarantee](#) is a program that uses an alternative selection rank for entry into most courses.

A selection rank is calculated from your Year 11 academic results and can be boosted by several factors such as completing up to three personal statements and living in a rural/regional area.

Successful applicants will receive a conditional offer for the Bachelor of Nursing/Bachelor of Paramedicine or the Bachelor of Paramedicine and will no longer require an ATAR or study scores for entry into the course.

To receive a formal offer, applicants will need to complete Year 12, meet course prerequisites, and preference the course in their VTAC account correctly.

Applications for the program will open on 22 July and close on 16 September 2024.

Note: applicants will still need to formally apply for courses via the Victorian Tertiary Admissions Centre.

## FIRST YEAR SUBJECTS

The following are the first-year subjects for the 2024 intake. They may change for the 2025 intake.

### Semester 1

Evidence for Practice  
Human Biological Science 1  
Fundamentals of Paramedicine Care  
Personal and Interpersonal Skills for Paramedicine.

### Semester 2

Being Human  
Human Biological Science 1  
Paramedicine Theory: Primary Care  
Paramedicine in Practice: Primary Care.

# LA TROBE UNIVERSITY

La Trobe is in the top 1% of universities worldwide.

Build industry contacts during placement at Ambulance Victoria.

Develop hands-on skills in the Paramedic Practical Laboratory at our Bendigo campus.

Paramedic graduates are qualified to gain employment in ambulance services across Australia and overseas.



Saving lives. Helping the community. Supporting people in crisis. There are few jobs more important than a paramedic. And industry needs are evolving. Paramedics play a vital role in the healthcare system; they assess patients, provide emotional support and free up hospital resources with on-the-spot treatment.

## BACHELOR OF PARAMEDIC PRACTICE (HONOURS)

La Trobe's Bachelor of Paramedic Practice (Honours) gives you the knowledge and skills to launch a career in this challenging and rewarding field of health. You'll develop a strong foundation in biosciences and paramedic practice for trauma, respiratory, cardiac, paediatric, and obstetric management. Note: students studying at Albury-Wodonga must transfer to the Bendigo campus after the first year.

## CLINICAL EXPERIENCE

Kickstart your career with first-hand paramedic experience. Build the experience and resilience to tackle this exciting career with work-based learning opportunities in hospitals, community settings and with Ambulance Victoria. You can also practice in the Paramedicine Practical Laboratory equipped with industry-standard medical equipment and an outdoor emergency simulation space.

## FIRST NATIONS AUSTRALIAN ENTRY

This is an alternative entry program into the Bachelor of Paramedic Practice with Honours for applicants who are First Nations Australian. Choose the 'First Nation Australian' tagged course via VTAC.

## PROFESSIONAL ACCREDITATION

The Bachelor of Paramedic Practice with Honours is accredited (with conditions) by the Paramedicine Accreditation Committee.

## HOW TO APPLY

Apply via the [Victorian Tertiary Admissions Centre](#). Applications will open for Year 12 students on 29 July 2024.

## COURSE INFORMATION

Click [here](#)

Course	Prerequisites - Units 3 and 4	Campus
Bachelor of Paramedic Practice with Honours	Minimum study scores of 30 in English (EAL) or 25 in any other English; and at least 20 in two of the following subjects: Biology, Chemistry, Health and Human Development, any Mathematics, Physical Education, Physics or Psychology. Bridging subjects are available.	Bendigo Albury-Wodonga
Bachelor of Paramedic Practice with Honours (First Nations Australian Entry)	As above. Applicants may be required to attend an interview.	Bendigo Albury-Wodonga



## PATHWAY

The following is an example of a pathway into the Bachelor of Paramedic Practice with Honours.

### Via a La Trobe University Diploma course

#### STEP 1: Diploma course (1-year)

Complete either of the following Diploma courses at La Trobe:

Diploma of Rural Health (Albury-Wodonga, Bendigo, Mildura, Shepparton).

Diploma of Health Science (Melbourne).

#### STEP 2: Paramedicine Degree

Apply for the 4-year Bachelor of Paramedic Practice with Honours. You may be able to gain credit for the first year of the degree.

## SELECTION RANK ADJUSTMENTS

If eligible, La Trobe will add adjustment factors to your VCE aggregate to recalculate your ATAR and boost your [selection rank](#) for entry into their courses. For example, your ATAR might be 60 but after adjustment factors are added, your selection rank might be 72.5. Adjustment factors are calculated from initiatives such as the following. Note – if you're eligible for multiple initiatives, the maximum aggregate adjustments you can receive is 20.

### Subject adjustments

Applicants can receive a maximum of 12 adjustments for high achievement in eligible Units 3 and 4 subjects. In the 2024 intake, the eligible subjects were: Health And Human Development, any Mathematics, Physical Education, LOTE, and any Science. Adjustments for the 2025 intake will be advertised via [VTAC](#) from 29 July 2024.

### Priority Access Program

A maximum of 15 adjustment factors are awarded to applicants who fall within any of the following categories: priority school (5), priority campus (5), regional school (5).

Read about the program [here](#). Note – the Priority Access Program is undergoing a review for the 2025 intake.

### Special Entry Access Scheme (SEAS)

Applicants can receive a maximum of 20 adjustment factors for disadvantage that has impacted their education. Applicants can apply for this scheme via the Victorian Tertiary Admissions Centre (VTAC) between 29 July – 11 October 2024 after creating their VTAC account and adding course preferences.

### Elite Athlete ATAR Adjustment

Applicants can receive up to 5 aggregate adjustments. Click [here](#) for information.

### Rural and Regional Student Access Scheme (RRSAS)

Students residing in an area classified as RA2 or higher are eligible for the following adjustments:

Regional students applying to courses at the Melbourne (Bundoora) campus will receive 5 aggregate points.

Regional students applying to courses at Bendigo, Albury Wodonga, Mildura and Shepparton will receive 10 aggregate points.

## GUARANTEED ATAR PROGRAMS

The following programs provide a guaranteed ATAR for the Bachelor of Paramedic Practice with Honours. Note: the ATARs listed below are relevant for the 2024 intake and may change for the 2025 intake.

### La Trobe Aspire Early Entry Program

Applications for the [Community Contribution](#) stream of the Aspire Early Entry program will open on 15 April and close on 6 September 2024. Selection is based on a statement about your community service, volunteering, or leadership. Successful applicants will unlock the following 'Aspire ATAR' for the Bachelor of Paramedic Practice with Honours.

Bendigo: 50

Albury-Wodonga: 50

### Regional Benefits Program

This [program](#) is for students who study at a regional school and is applicable to the Bachelor of Paramedic Practice with Honours at the Bendigo and Albury-Wodonga campuses. The guaranteed ATAR is 80.

## FIRST YEAR SUBJECTS

The following are the first-year subjects for the 2024 intake. They may change for the 2025 intake.

### Semester 1

Human Biosciences A.  
Foundations of Professional Communication.  
Rural Community Engagement.  
Understanding Health and Wellbeing.

### Semester 2

Human Biosciences B.  
Research and Evidence in Practice.  
Foundations of Paramedic Practice.  
First Nations Health for Paramedics.

# VICTORIA UNIVERSITY

Complete 360 hours of clinical placement.

Learn through simulation scenarios in the specialised paramedicine facilities and labs.

Study the degree via the unique VU Block Model program.

Ambulance Victoria and VU have a strong working relationship involving the co-location of Ambulance Victoria resources on VU campuses.



Begin a challenging and rewarding career as a paramedic with a Bachelor of Paramedicine from VU. Gain the skills, knowledge and techniques to treat patients in out-of-hospital care. You'll graduate from the Bachelor of Paramedicine able to manage all aspects of the needs of paramedic patients (physical, psychological, social).

## BACHELOR OF PARAMEDICINE

This course will prepare you to be sensitive to issues in diverse communities and treat patients accordingly. Our paramedicine degree is held in very high regard in the industry for its hands-on approach. You will learn through practical scenarios and clinical placements, and also gain a solid understanding of theory. VU graduates are compassionate and highly capable professionals. Studying at VU will prepare you for the real world of emergency health.

## CLINICAL EXPERIENCE

A key part of your paramedic course will be spending time in ambulances, observing and assisting as part of your paramedic clinical placements. You will gain direct practical experience as a real paramedic under a clinical supervisor within Ambulance Victoria. These placements will provide you with confidence and a competitive advantage in the workforce. Some of your 360 hours clinical-placement experience will be completed in a high-fidelity simulation suite.

## VU MOONDANI BALLUK ABORIGINAL ADMISSION PROGRAM

Aboriginal and Torres Strait Islander students may be able to apply for the paramedicine degree via this [program](#). Fill out the application form [here](#) and Moondani Balluk staff will contact you with information

## PROFESSIONAL ACCREDITATION

The Bachelor of Paramedicine is accredited (with conditions) by the Paramedicine Accreditation Committee.

## HOW TO APPLY

Apply via the [Victorian Tertiary Admissions Centre](#). Applications will open for Year 12 students on 29 July 2024.

## COURSE INFORMATION

Click [here](#)

Course	Prerequisites	Campus
Bachelor of Paramedicine	Minimum study score of 25 in English (EAL) or 20 in any other English.	St Albans



## PATHWAYS

The following are examples of pathway courses into the Bachelor of Paramedicine.

### Via a VET Pathway

#### STEP 1: Diploma of Emergency Health Care

This course will take around 7-months to complete.

#### STEP 2: Bachelor of Paramedicine

You will be guaranteed entry into the Bachelor of Paramedicine and will receive credit for 8 subjects towards the degree.

### Via a higher-education pathway

#### STEP 1: Bachelor degree

Complete at least a semester of an Australian Higher Education award (or equivalent).

#### STEP 2: Bachelor of Paramedicine

Apply for the Bachelor of Paramedicine.

## SELECTION RANK ADJUSTMENTS

If eligible, Victoria University will add adjustment factors to your VCE aggregate to recalculate your ATAR and boost your [selection rank](#) for entry into their courses. Adjustment factors are calculated from initiatives such as the following. Note - if you're eligible for multiple initiatives, the maximum aggregate adjustments you can be awarded is 20.

### Subject adjustments

Applicants can receive up to 20 adjustments for high achievement in eligible Units 3 and 4 subjects. In the 2024 intake, the eligible subjects were: Biology, Chemistry, English (EAL), English other than EAL, Health And Human Development, any Mathematics, Physics and Psychology. Eligible subjects for the 2025 intake will be advertised via [VTAC](#) from 29 July 2024.

### Special Entry Access Scheme (SEAS)

Applicants can receive adjustment points for short or long-term disadvantage. Applicants can apply for this scheme via the Victorian Tertiary Admissions Centre (VTAC) between 29 July – 11 October 2024 after creating their VTAC account and adding course preferences.

### Location adjustment

Applicants may receive adjustments based on their location or where they went to school. Apply via SEAS and tick yes for Category 1.

### Elite Athlete ATAR Adjustment

Applicants can receive up to 5 aggregate adjustments. Click [here](#) for information.

## EARLY ENTRY PROGRAM

Applications for the [VU Guaranteed](#) program will open later in the year. Selection is based on answers to four questions. Successful applicants will receive 5 aggregate adjustments towards their selection rank.

## FIRST YEAR SUBJECTS

The following are the first-year subjects for the 2024 intake. They may change for the 2025 intake.

### Semester 1

Anatomy and Physiology 1  
Paramedic Law, Ethics and Professionalism  
Cultural Safety  
Paramedic Clinical Practice 1

### Semester 2

Anatomy and Physiology 2  
Introduction to Pharmacology  
Evidence and Research  
Paramedic Clinic Practice 2.

# MONASH UNIVERSITY

Complete up to 60 days of clinical placement.

Course is fully accredited by the Council of Ambulance Authorities.

You'll be qualified to work as a paramedic with national and international ambulance services

Research ranking of 4 with the ERA (above world standard).



A Bachelor of Paramedicine degree prepares you to qualify as a registered paramedic and deliver emergency health care in a range of settings. This accredited course gives you the paramedic skills, knowledge and clinical experience to assess life-threatening situations, provide out-of-hospital care and save lives.

## BACHELOR OF PARAMEDICINE

Our Bachelor of Paramedicine prepares you to qualify as a registered paramedic. Starting with core knowledge of anatomy, physiology and pharmacotherapy, you'll also study the role of paramedics in practice, research, education and leadership. You'll learn to treat patients with a range of medical conditions including trauma, respiratory, cardiovascular, mental health, maternal and neonatal health.

Our teaching takes a practical and hands-on approach. Taught by experienced paramedics, you'll learn by doing, applying your skills to realistic simulation scenarios.

## CLINICAL EXPERIENCE

From your first semester, you'll gain practical experience and complete up to 60 days of placement across your degree, working in clinical and community settings with ambulance services, non-emergency transport and in the emergency department of Victoria's major hospitals.

These hospital placements expose you to the diverse nature of being a paramedic and give you the chance to work collaboratively with other health care professionals. You'll also have opportunities to practice your skills in realistic simulation scenarios on campus, including managing mass casualty disasters.

Course	Prerequisites – Units 3 and 4	Campus
Bachelor of Paramedicine	A study score of at least 30 in English (EAL) or at least 25 in English other than EAL, plus a study score of at least 25 in General Mathematics or at least 22 in one of Mathematical Methods or Specialist Mathematics.	Peninsula
Bachelor of Paramedicine (Indigenous Entry)	As above plus a compulsory supplementary form, and a voluntary interview.	Peninsula

## PROFESSIONAL ACCREDITATION

The Bachelor of Paramedicine is accredited (with conditions) by the Paramedicine Accreditation Committee.

## FIRST YEAR SUBJECTS

The following are the first-year subjects for the 2024 intake. They may change for the 2025 intake.

### Semester 1

Foundations of anatomy & physiology for health practice 1  
Introduction to paramedic research and evidence  
Professionalism in paramedic practice  
Foundations of paramedic practice 1.

### Semester 2

Foundations of anatomy & physiology for health practice 2  
Health and disease across the lifespan  
Paramedicine in the Australian health care system  
Foundations of paramedic practice 2.

## HOW TO APPLY

Apply via the [Victorian Tertiary Admissions Centre](#). Applications will open for Year 12 students on 29 July 2024.

## COURSE INFORMATION

Click [here](#)



## PATHWAYS

The following are examples of pathways into the paramedicine degree.

### Via a VET pathway

#### STEP 1: Diploma

Complete a graded Diploma at a registered training organisation such as a TAFE. Ungraded courses will not be considered.

#### STEP 2: Paramedicine

Apply for the Bachelor of Paramedicine. Applicants must have completed the VCE subject prerequisites to be eligible. Admission to this course is competitive and applicants may need to meet a higher requirement to be offered a place.

### Via a higher education pathway

#### STEP 1: tertiary study

Complete at least one year of full-time study (48 credit points) of a recognised university degree.

#### STEP 2: Paramedicine

Apply for the Bachelor of Paramedicine. Applicants must have completed the VCE subject prerequisites or equivalent university units to be eligible. Admission to this course is competitive and applicants may need to meet a higher requirement to be offered a place.

## SELECTION RANK ADJUSTMENTS

If eligible, Monash will add adjustment factors to your VCE aggregate to recalculate your ATAR and boost your **selection rank** for entry into their courses. For example, your ATAR might be 60 but after adjustment factors are added, your selection rank might be 70. Adjustment factors are calculated from initiatives such as the following:

### Subject adjustments

Applicants can receive up to 6 adjustments for high achievement in eligible Units 3 and 4 subjects. In the 2024 intake, the eligible subjects were: Biology, Chemistry, Health And Human Development, Physics, General Mathematics, Mathematical Methods, and Specialist Mathematics. Eligible subjects for the 2025 intake will be advertised via [VTAC](#) from 29 July 2024.

### Elite Student Athlete and Performer Entry Scheme

Applicants can receive up to 10 ATAR points. Click [here](#) for information.

### Special Entry Access Scheme (SEAS)

Applicants can receive adjustment factors for disadvantage that has impacted their education. Applicants can apply for this scheme via the Victorian Tertiary Admissions Centre (VTAC) between 29 July – 11 October 2024 after creating their VTAC account and adding course preferences.

## GUARANTEED ATAR PROGRAMS

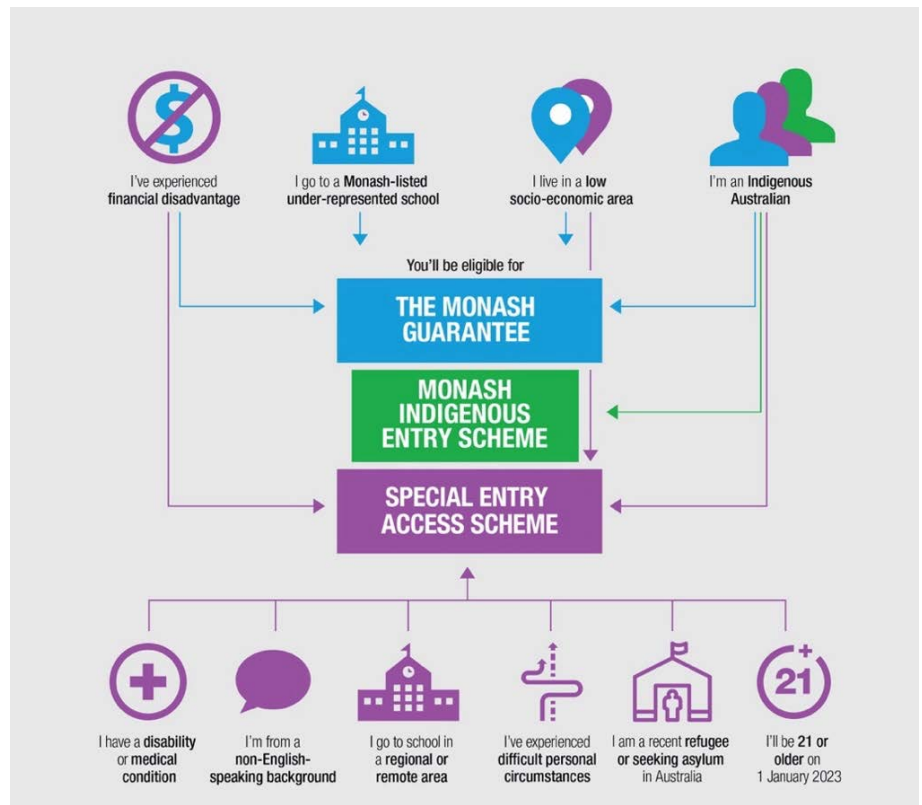
The following programs provide a guaranteed ATAR for The Bachelor of Paramedicine. Note: the ATARs listed below are relevant for the 2024 intake and may change for the 2025 intake.

### Monash Guarantee

Applicants eligible for the [Monash Guarantee](#) program will be guaranteed entry into the Bachelor of Paramedicine with an ATAR of at least 76, providing they meet entry requirements and preference the course in their VTAC account correctly. Applicants apply for the scheme by ticking 'yes' to SEAS Category 1 – Personal Information and Location. Applications will open on 29 July via VTAC and close on 11 October 2024.

### Monash Indigenous Entry Scheme

This is an alternative entry into the Bachelor of Paramedicine for applicants who are First Nations Australian. Choose the 'Indigenous Entry' tagged course via VTAC. Applicants will need to achieve a minimum ATAR of 50, meet course entry requirements, and submit a supplementary information form. Click [here](#) for information.



# FEDERATION UNIVERSITY

Graduate entry course.

You'll experience 16 shifts with real paramedics working across Victoria and in our emergency zone with our advanced life-support training mannequin.

Graduates will be eligible to apply for Graduate Entry Programs within Ambulance Victoria (AV) and Private Patient Transport Services.



The University offers a graduate pathway into paramedicine. You will need to complete a Bachelor of Nursing first and obtain post graduate clinical experience.

## GRADUATE DIPLOMA OF PARAMEDICINE

Go from a nurse to a paramedic in one year with the Graduate Diploma of Paramedicine. The Graduate Diploma of Paramedicine aims to provide you with the appropriate knowledge, skills and values, to be effective in providing paramedical patient care.

This patient care occurs in pre-hospital environments to those who are suffering a health crisis, whether this be traumatic, medical, surgical and/or psychological.

The program will prepare graduates for entry into the paramedic discipline as beginning practitioners who are competent to practice in a variety of clinical settings.

## COURSE INFORMATION

Graduate Diploma of Paramedicine  
Ballarat – Mt Helen, 1-year.  
Click [here](#) for further information.

## ENTRY PATHWAY

Below is a suggested entry pathway into the Graduate Diploma.

### Step 1

Complete the 3-year Bachelor of Nursing and Register as a Division 1 Nurse with the Nursing and Midwifery Board of Australia.

### Step 2 – Option A

Complete a 12-month graduate nursing program with a specialisation in emergency or critical care nursing.

### Step 2 – Option B

Work in an emergency department or in Critical Care as a Division 1 Registered Nurse for at least 12-months.

### Step 3

Apply for the Graduate Diploma of Paramedicine and complete the 1-year degree.

## AFTER YOU GRADUATE

### Ambulance Victoria (optional)

In the final semester of the Graduate Diploma of Paramedicine, apply for the Graduate Ambulance Paramedic program with Ambulance Victoria.